

Images of RS3 (Hide-scraping) residues

used in Blind Test 1

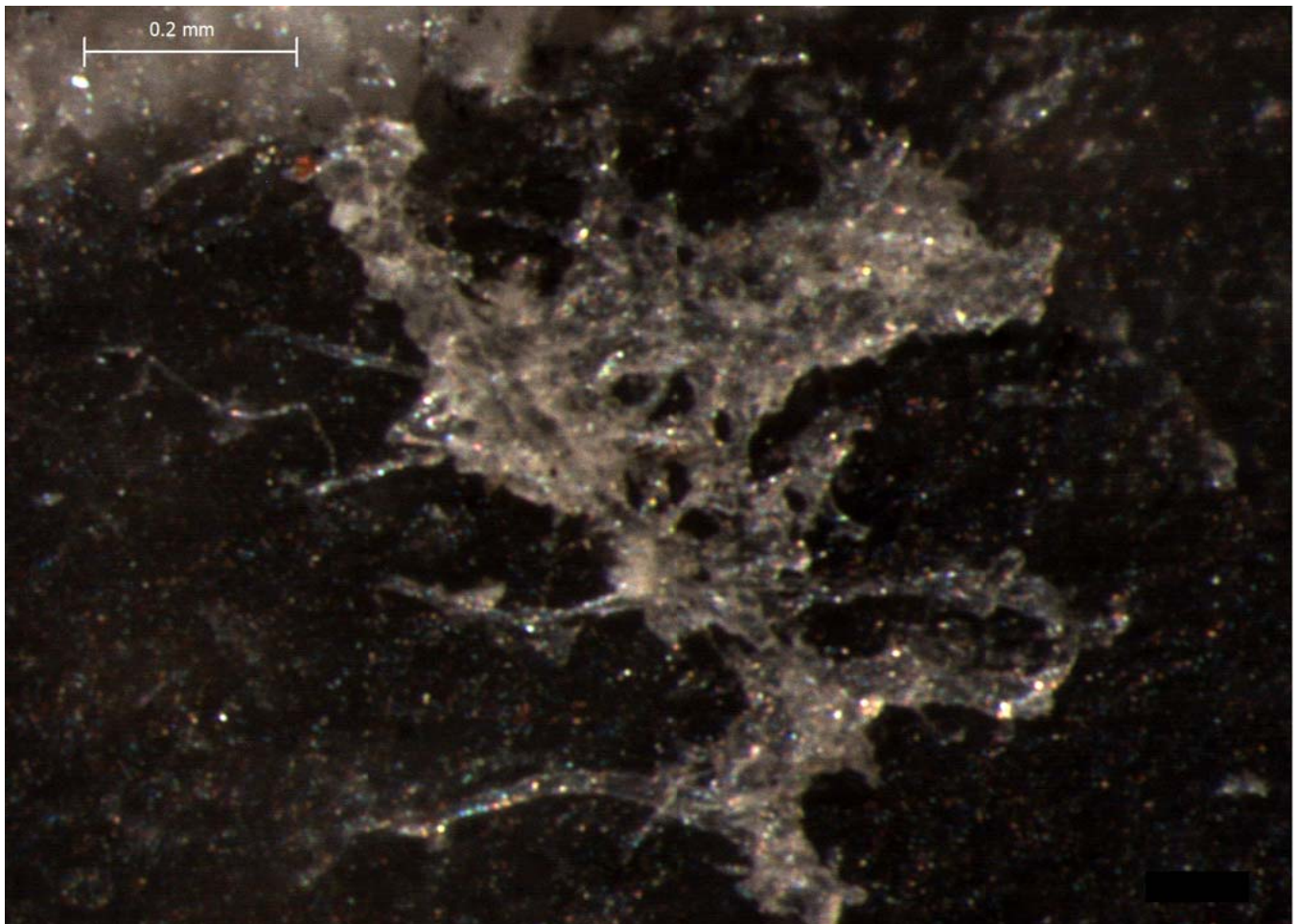
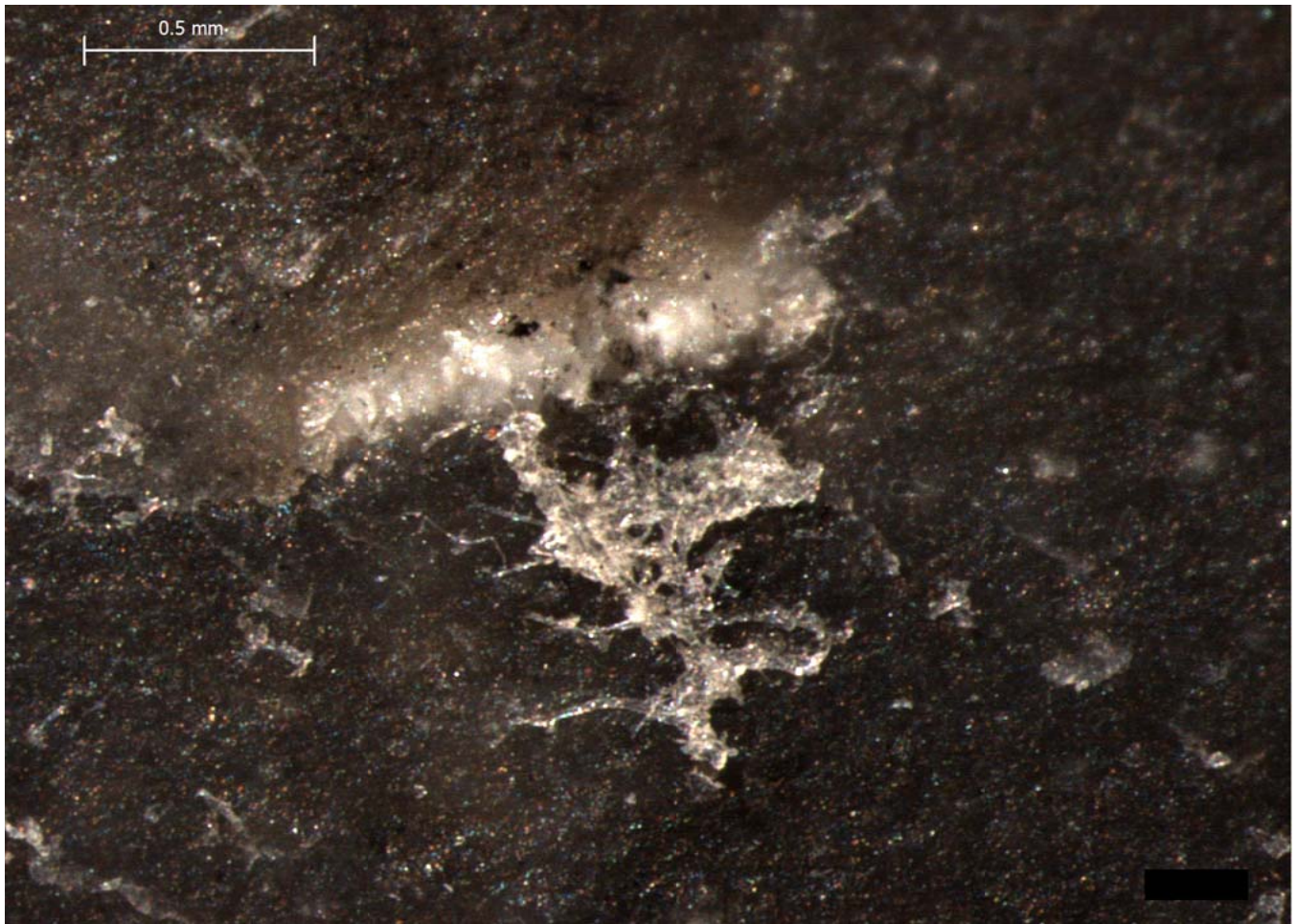
The images published in this pdf are those that were used in the testing portion of the experiment reported in Monnier et al. 2012, *J. Arch. Sci.* For questions, please contact Gilliane Monnier at monni003@umn.edu.

Naming conventions: 'RS' = Residue Study; 'D' = Dorsal side; 'V' = Ventral side; 'a', 'b', etc. = residue number.

For example, "3Db" refers to tool RS3, residue "b" on the dorsal surface.

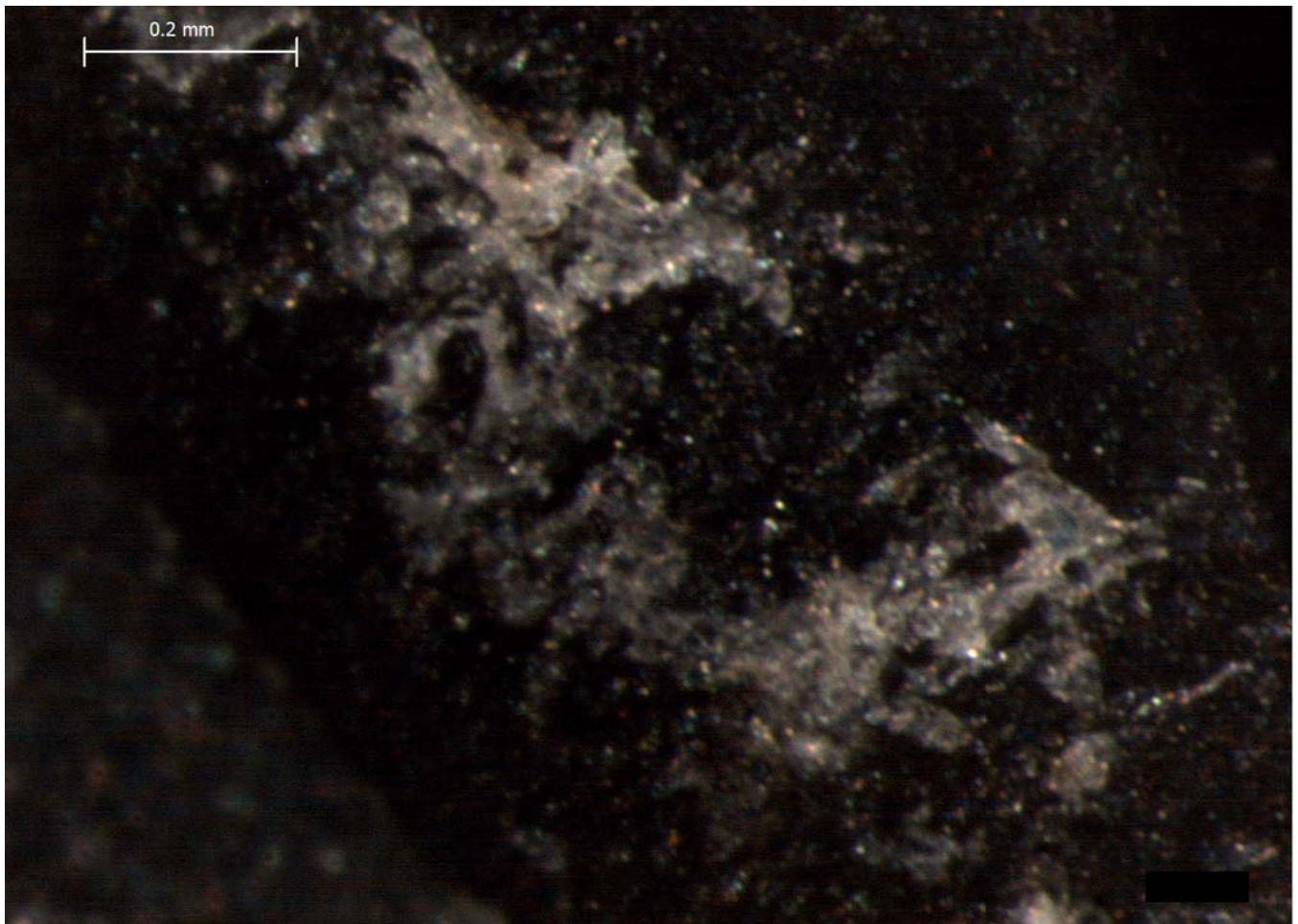
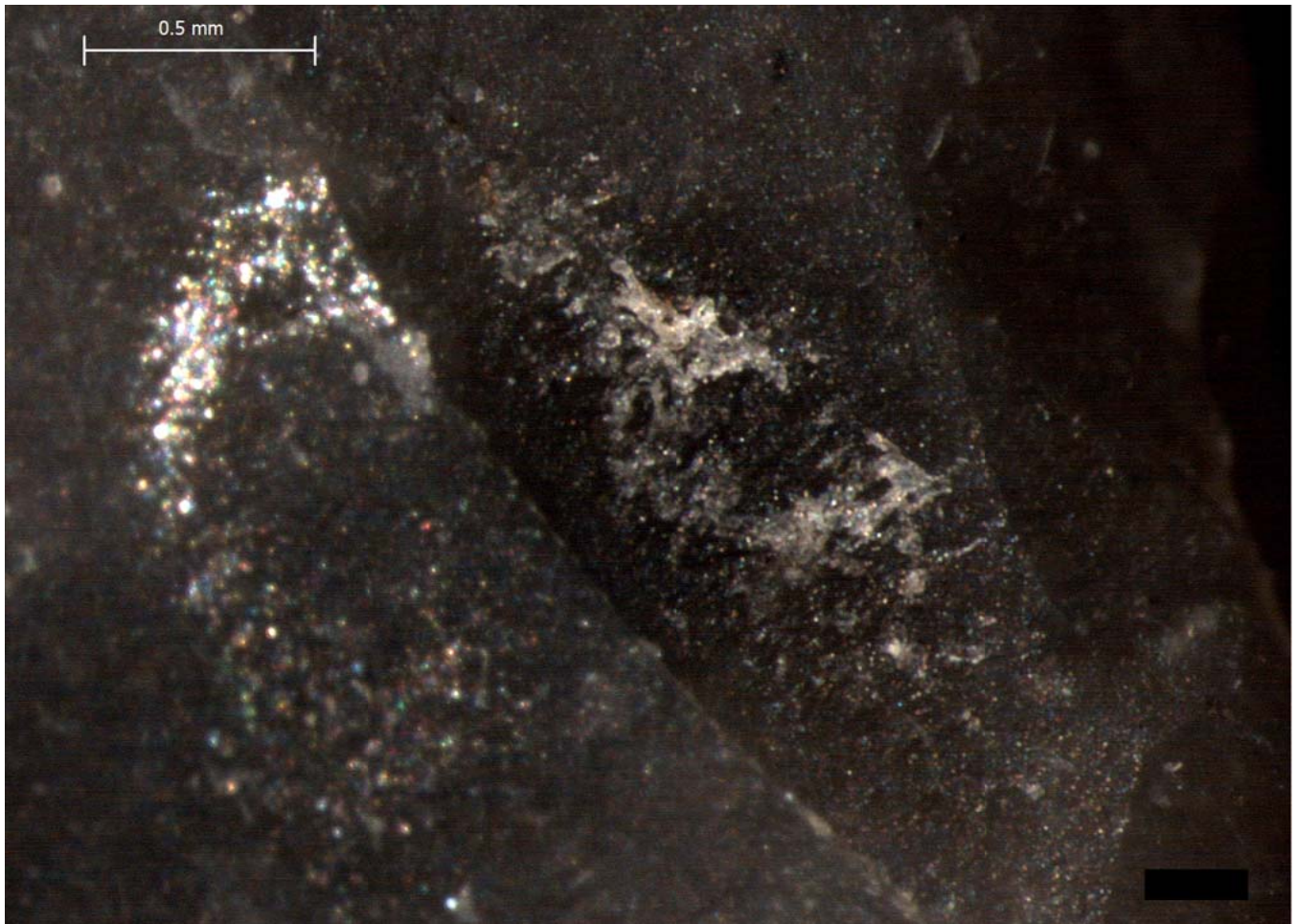
Blind Test 1

Residue 3Db



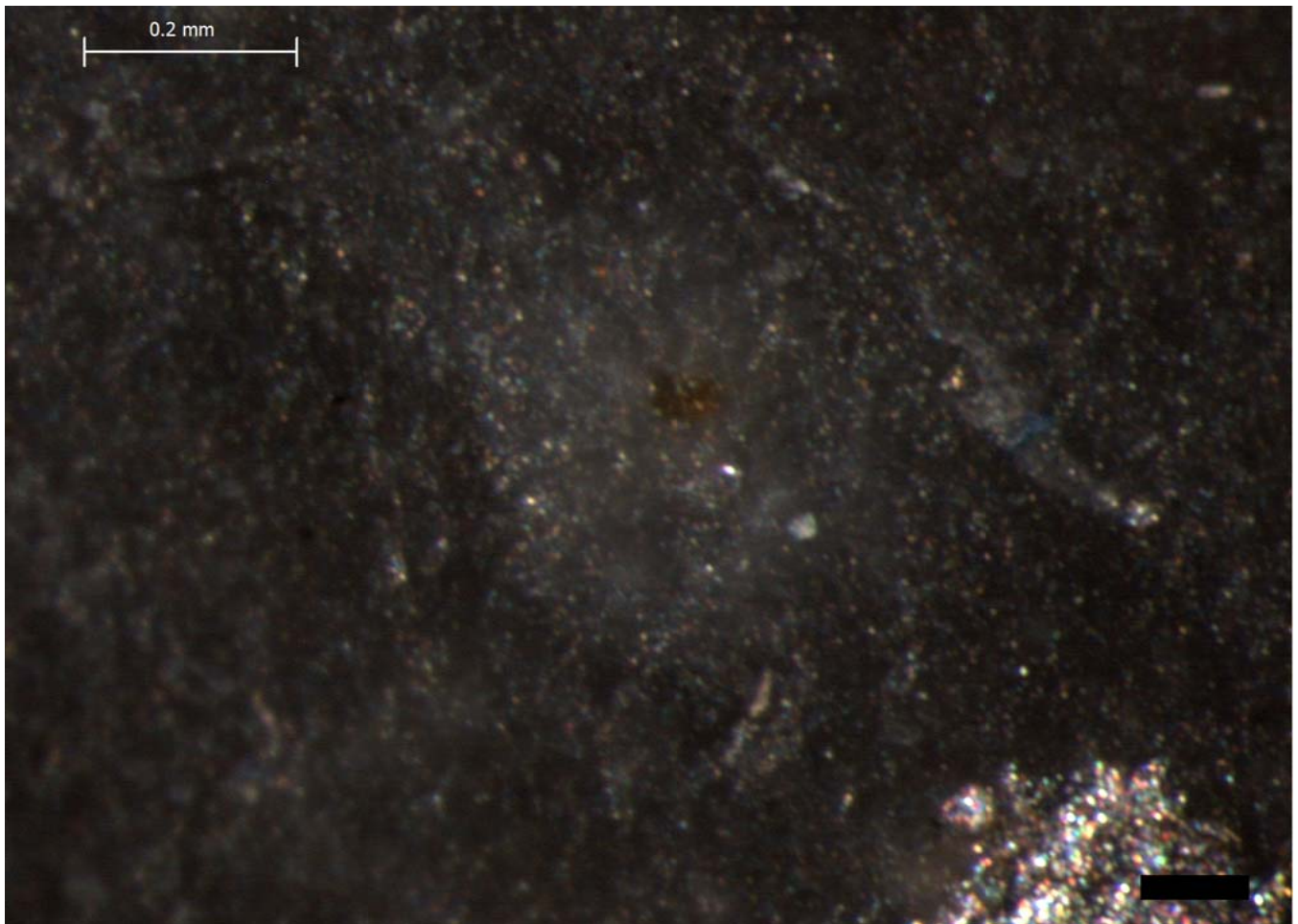
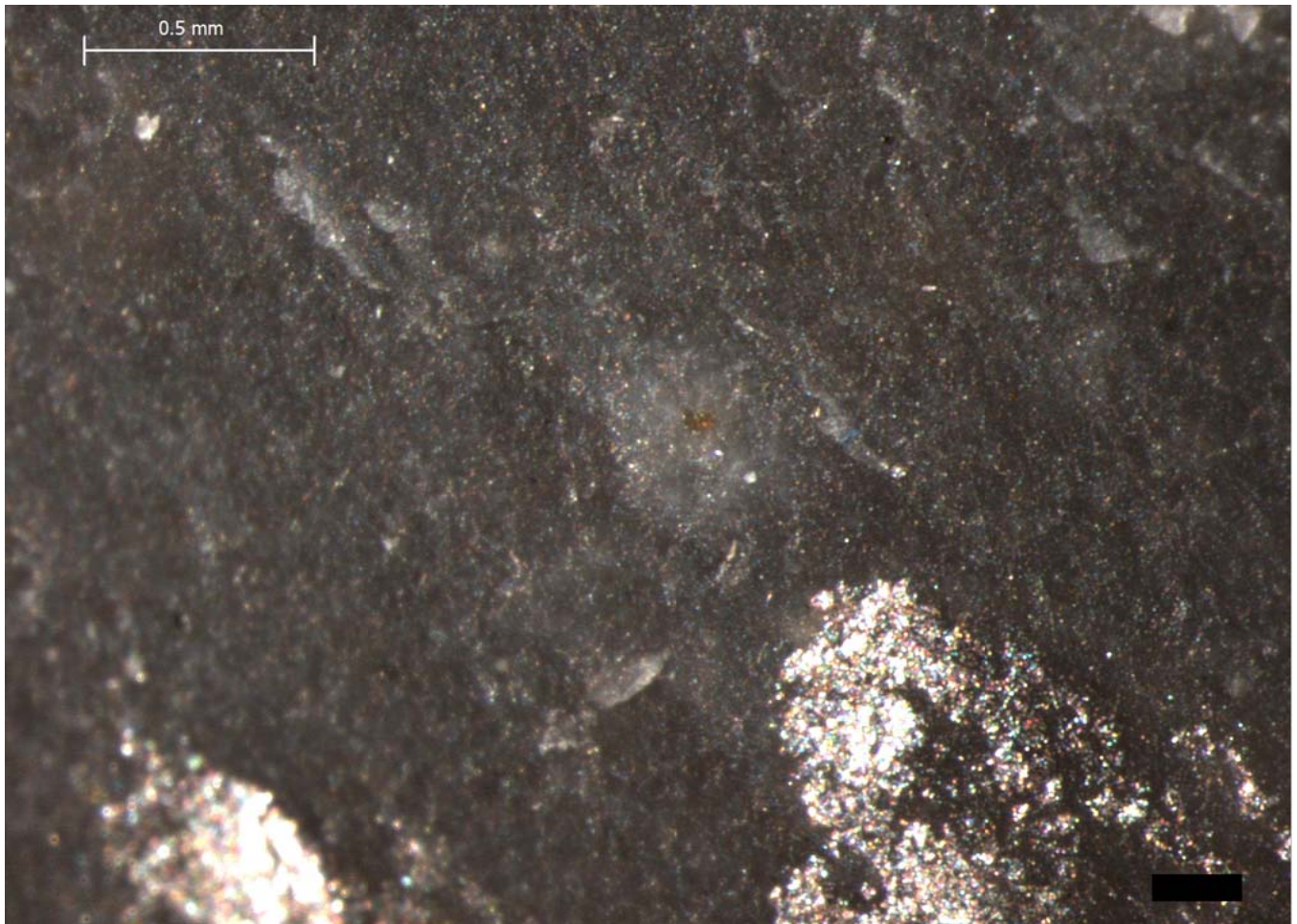
Blind Test 1

Residue 3Dc



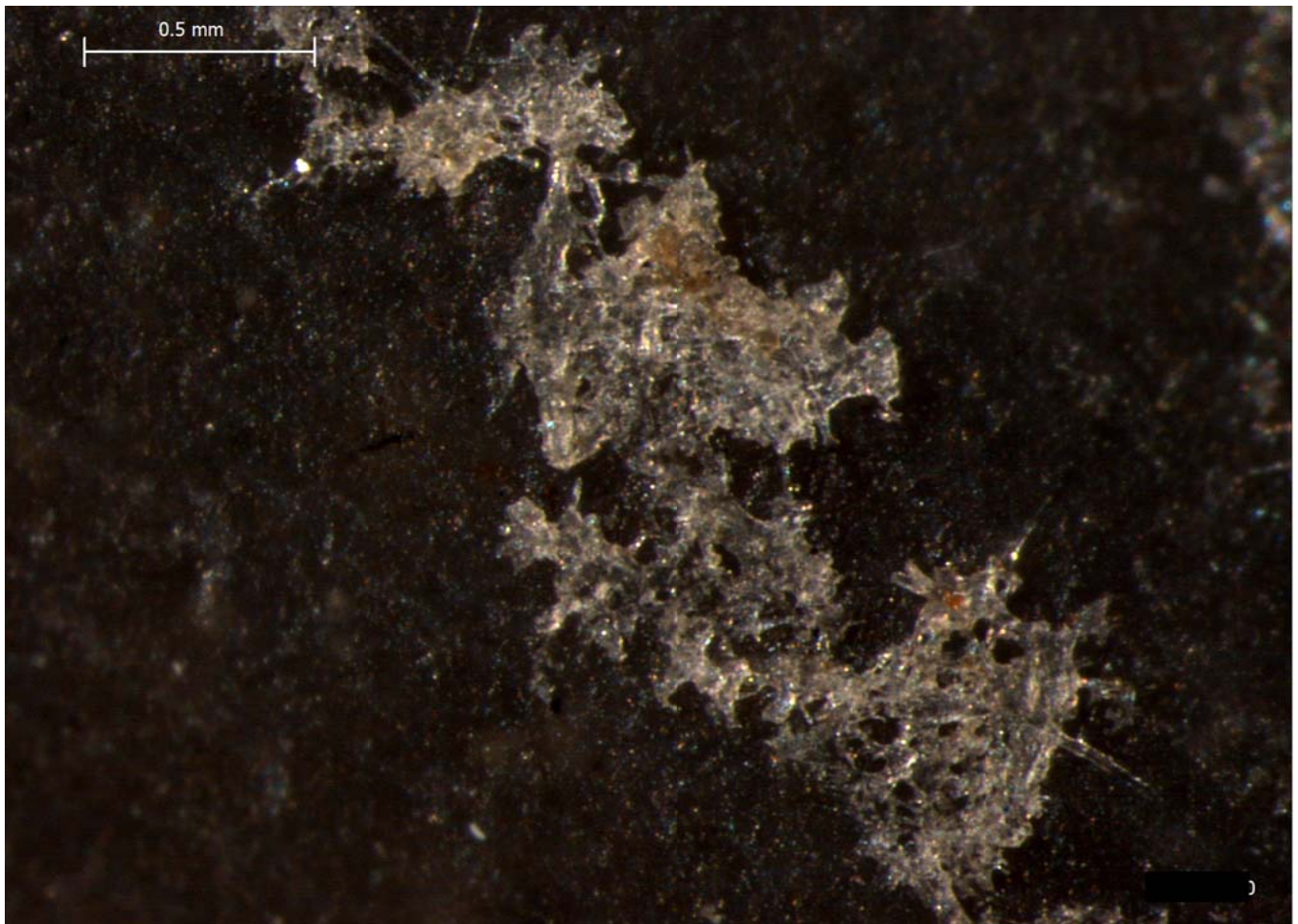
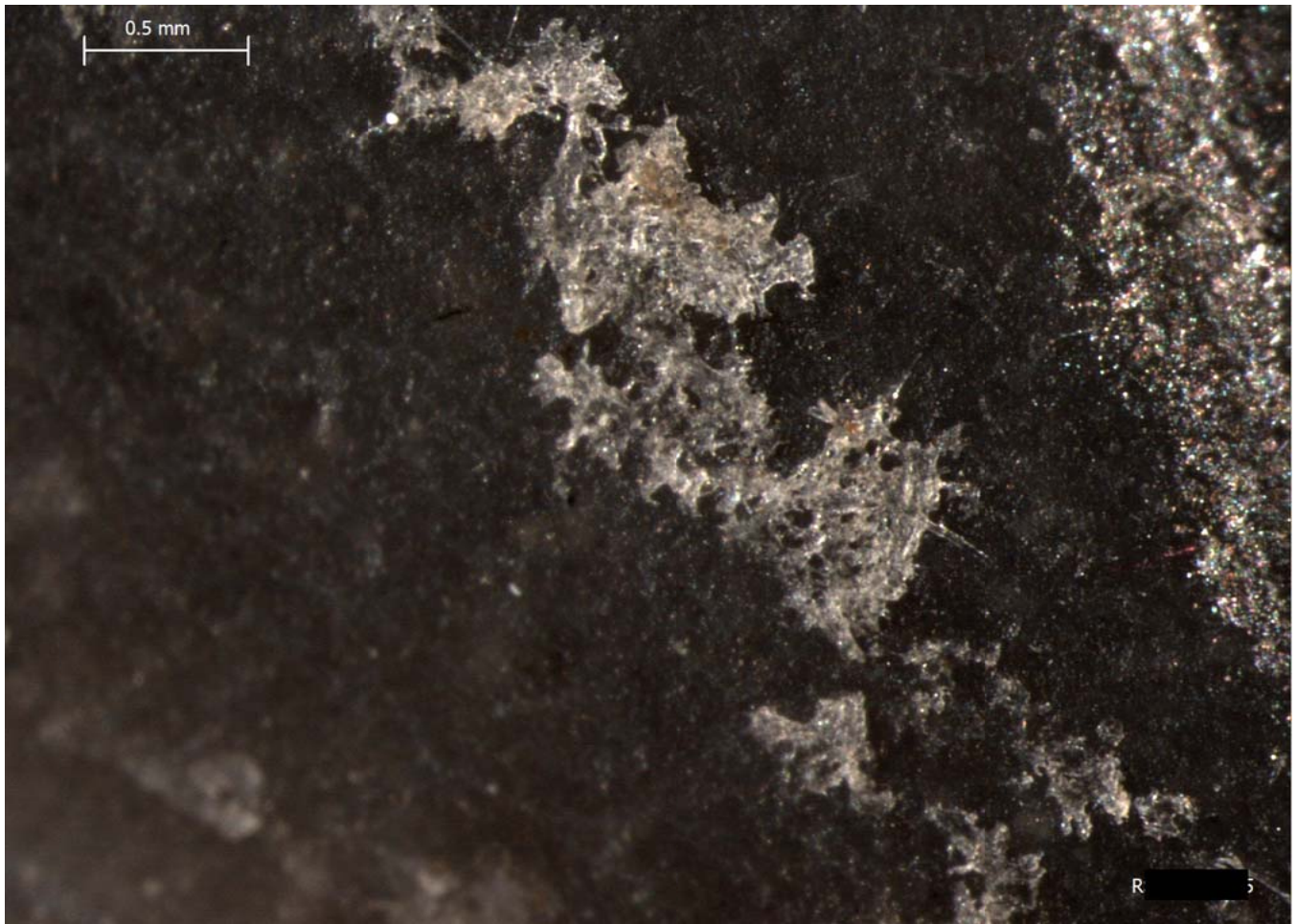
Blind Test 1

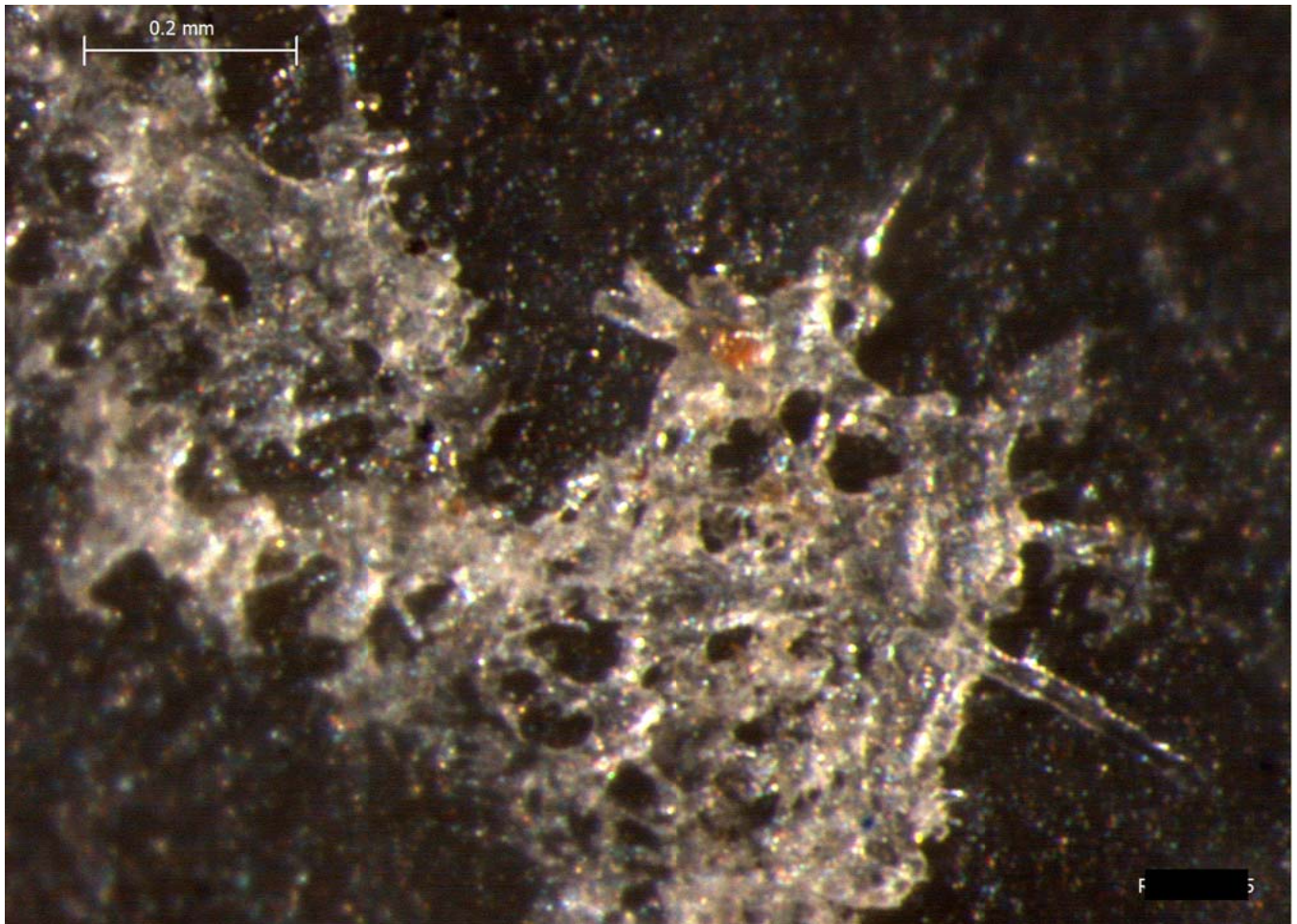
Residue 3Dd



Blind Test 1

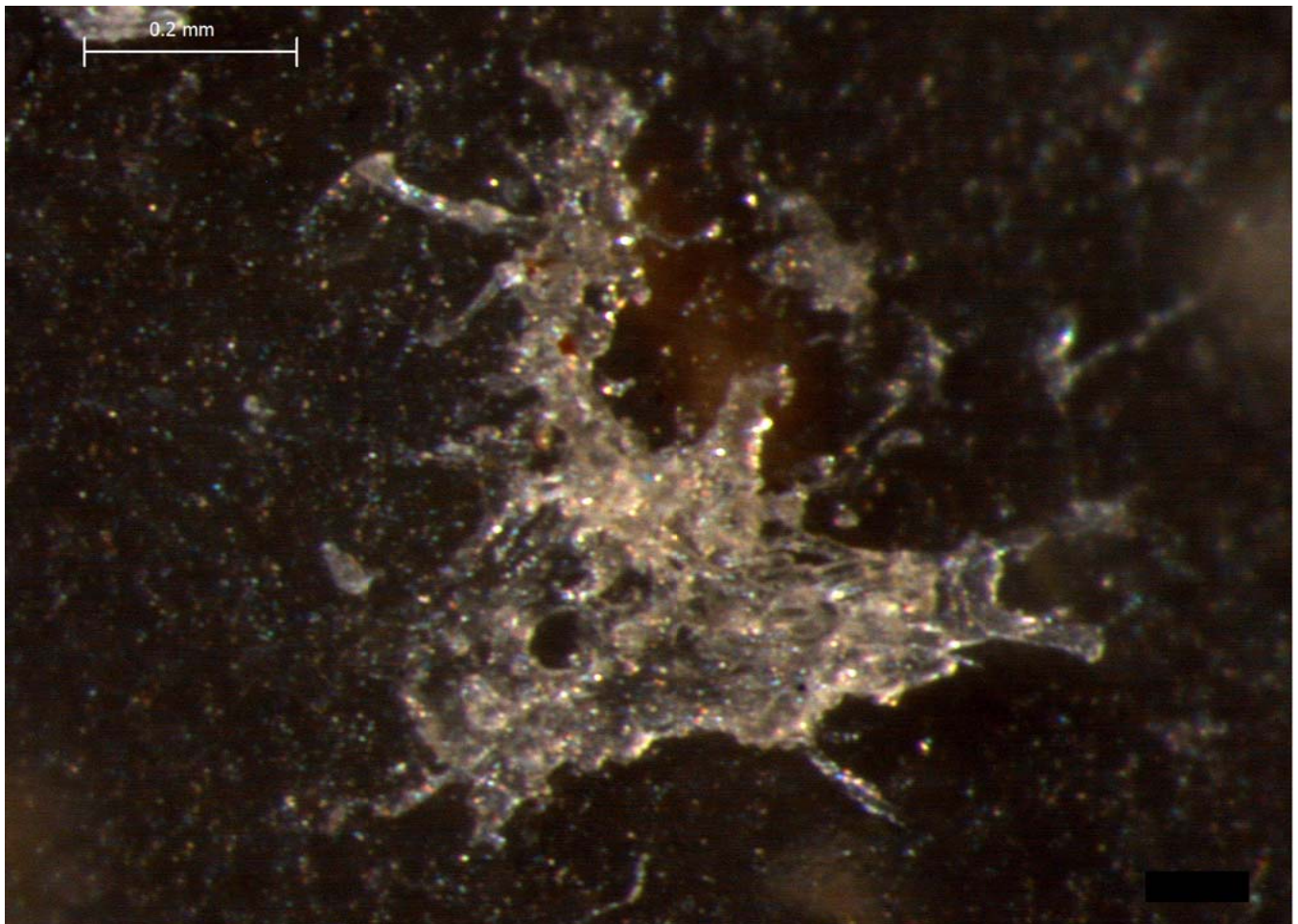
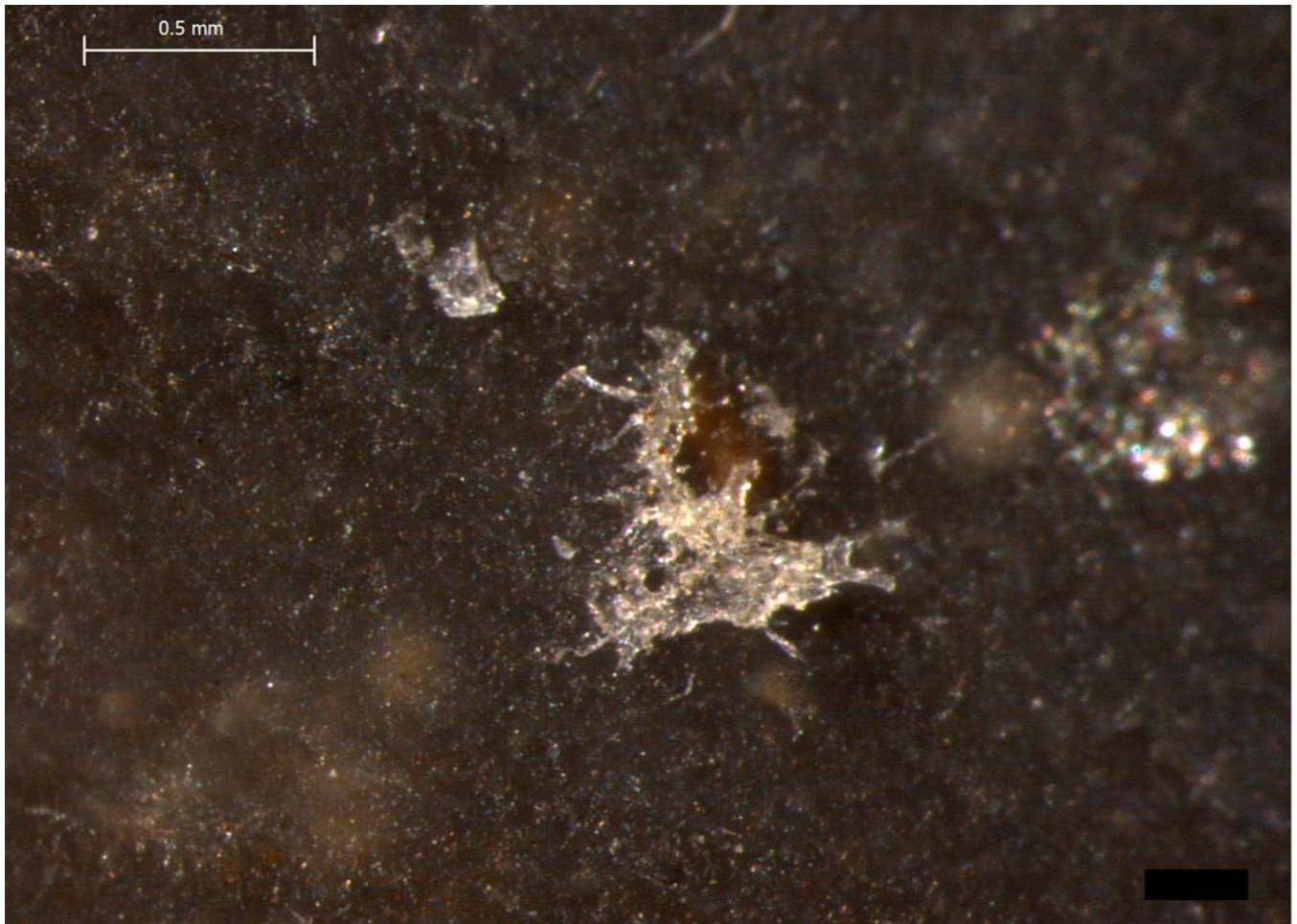
Residue 3De





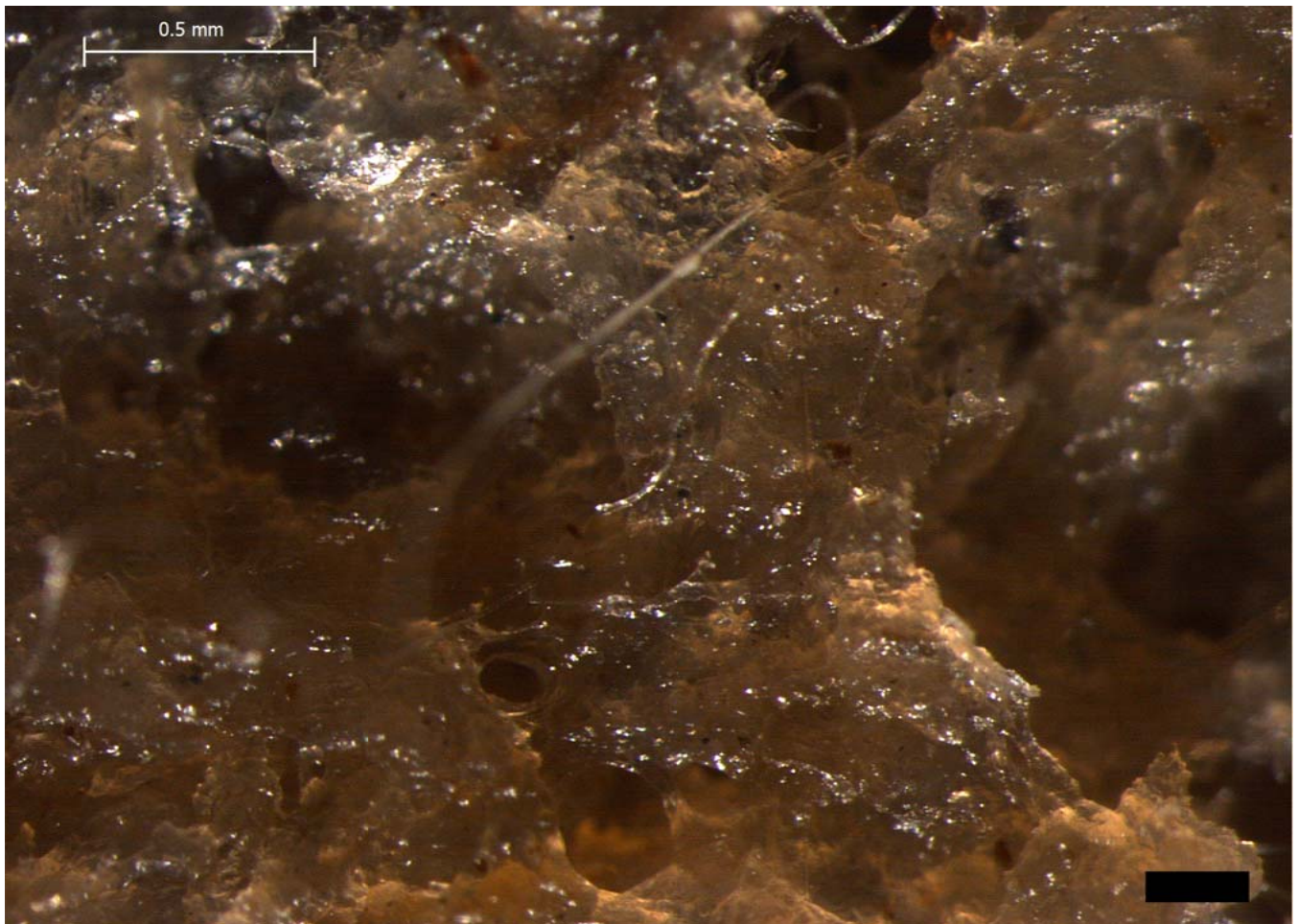
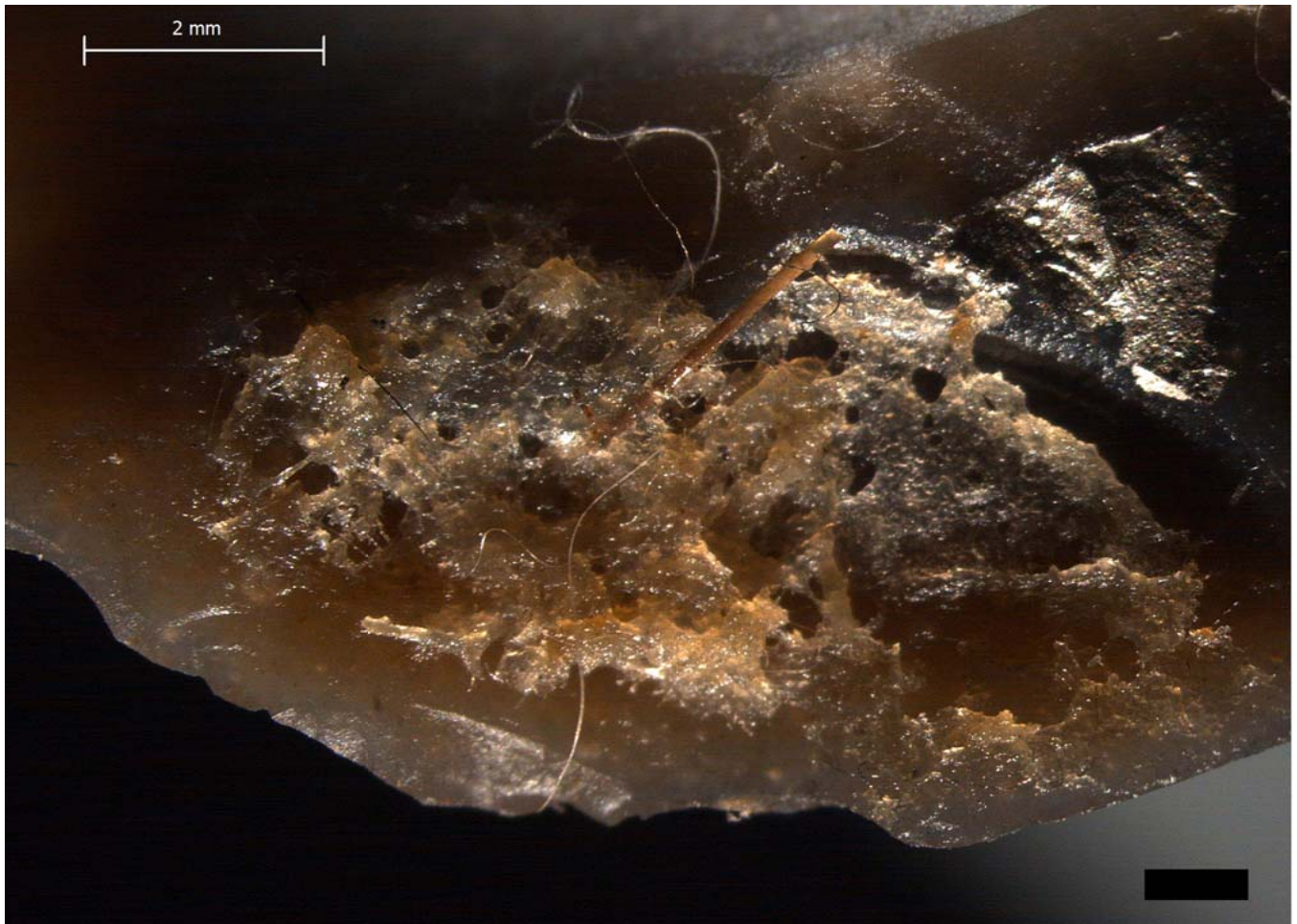
Blind Test 1

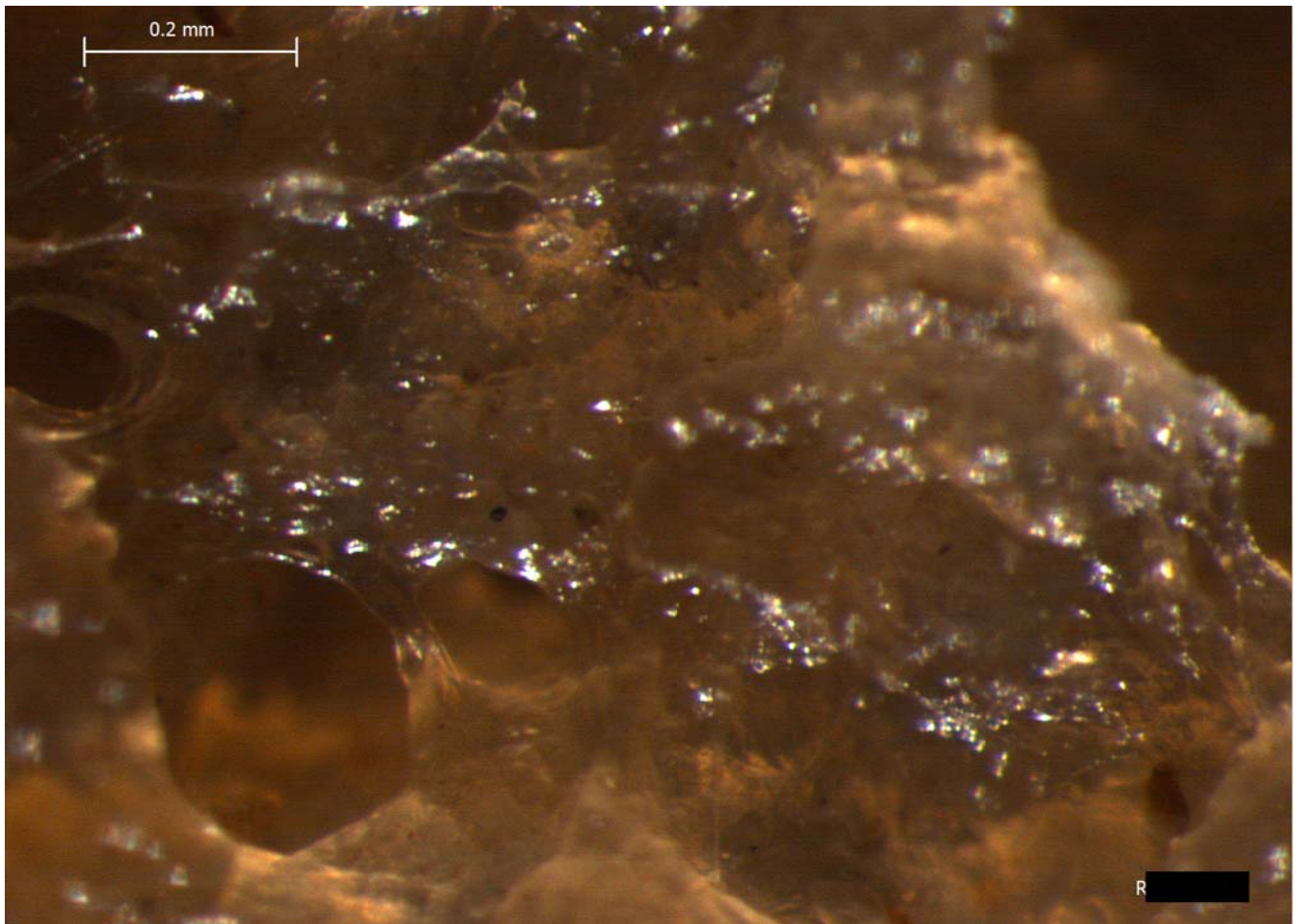
Residue 3Dg

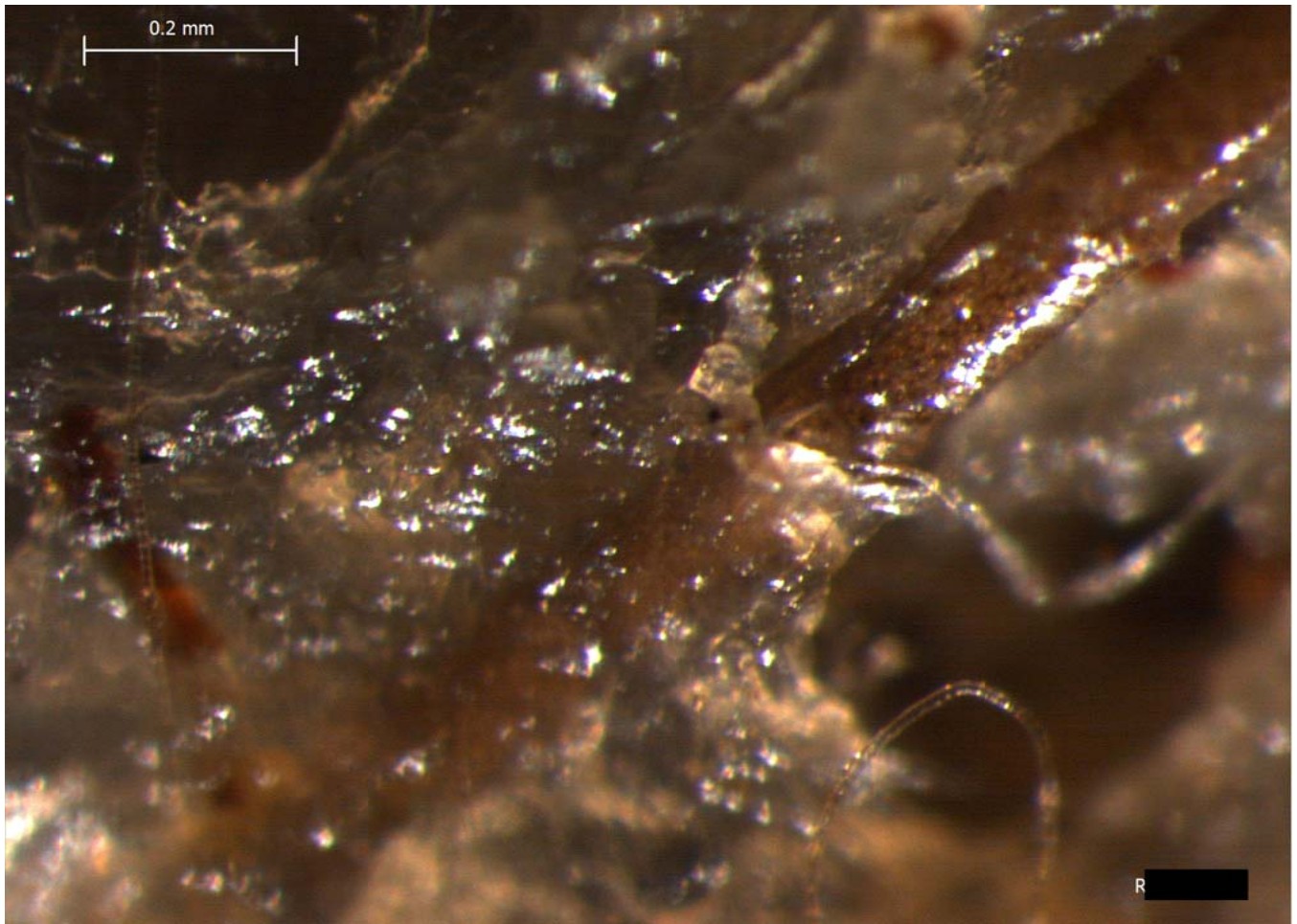


Blind Test 1

Residue 3Va

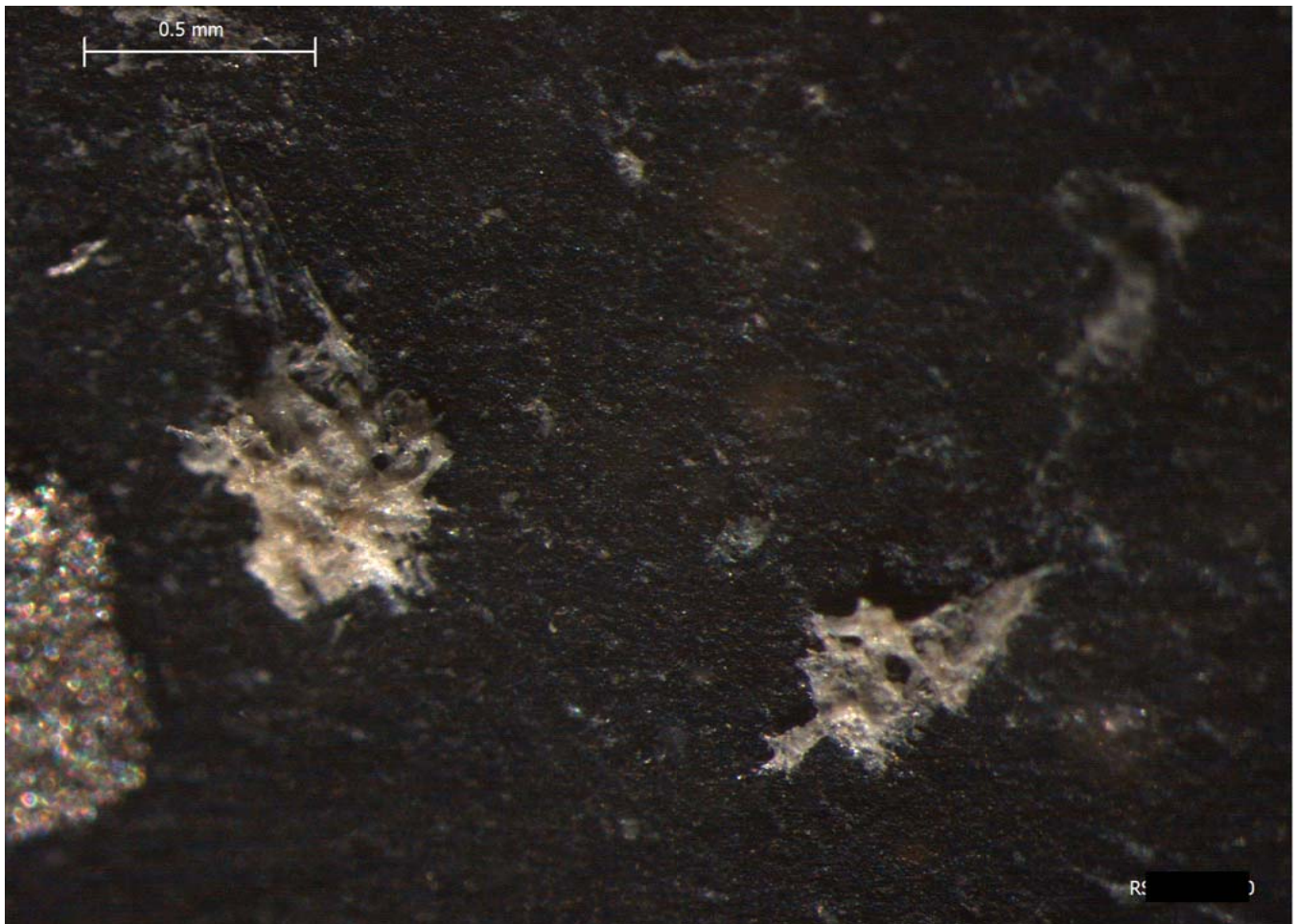
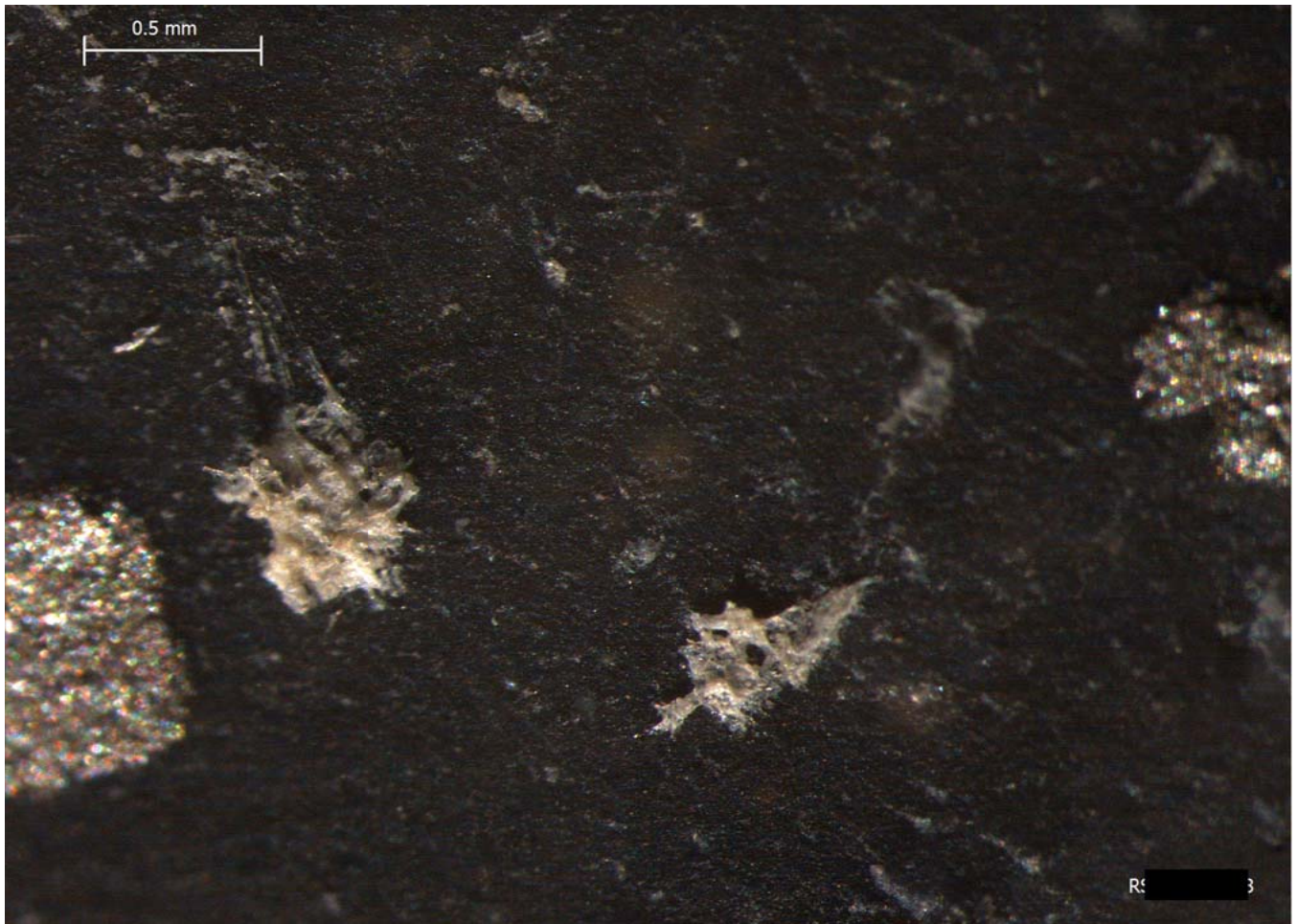


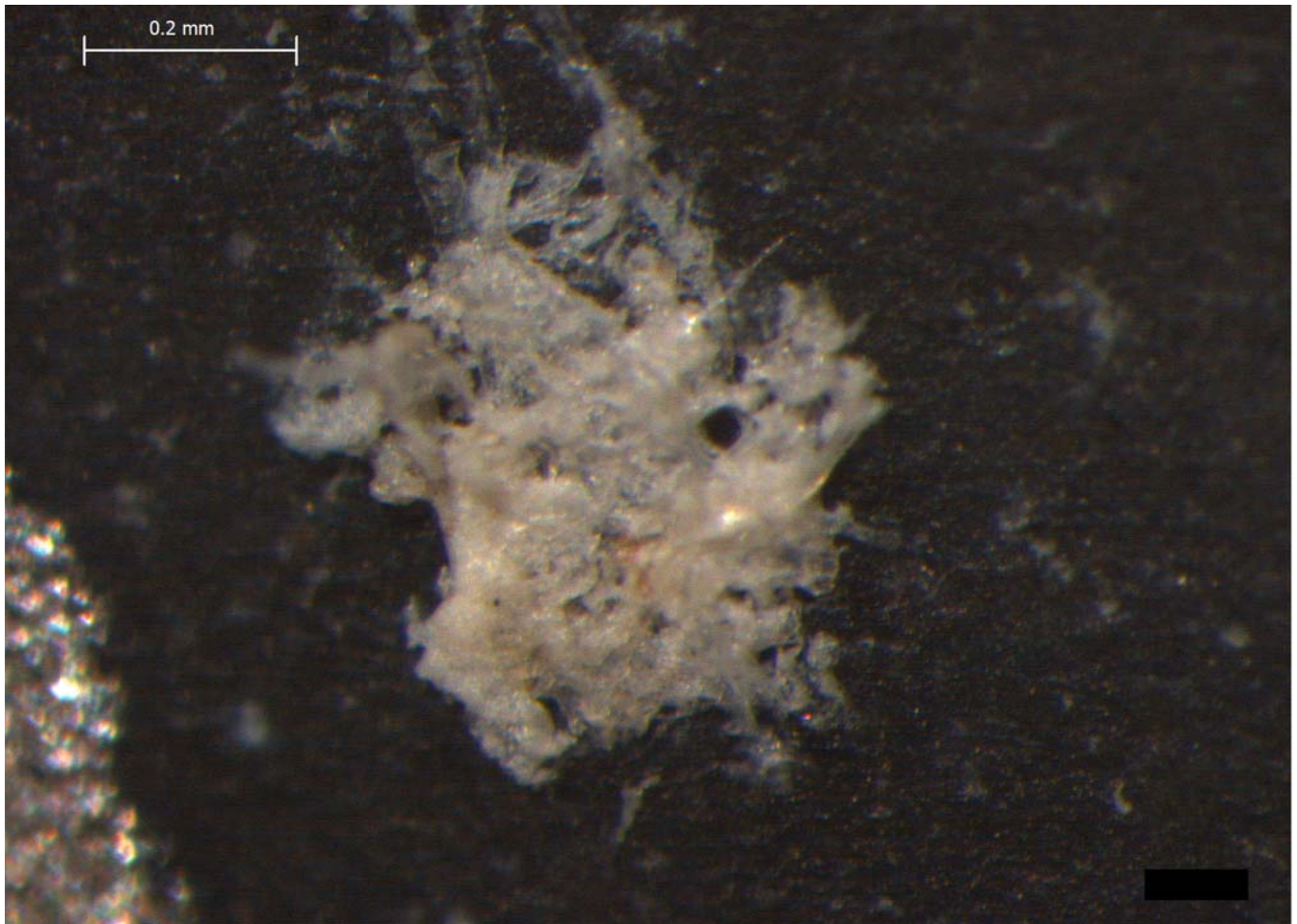




Blind Test 1

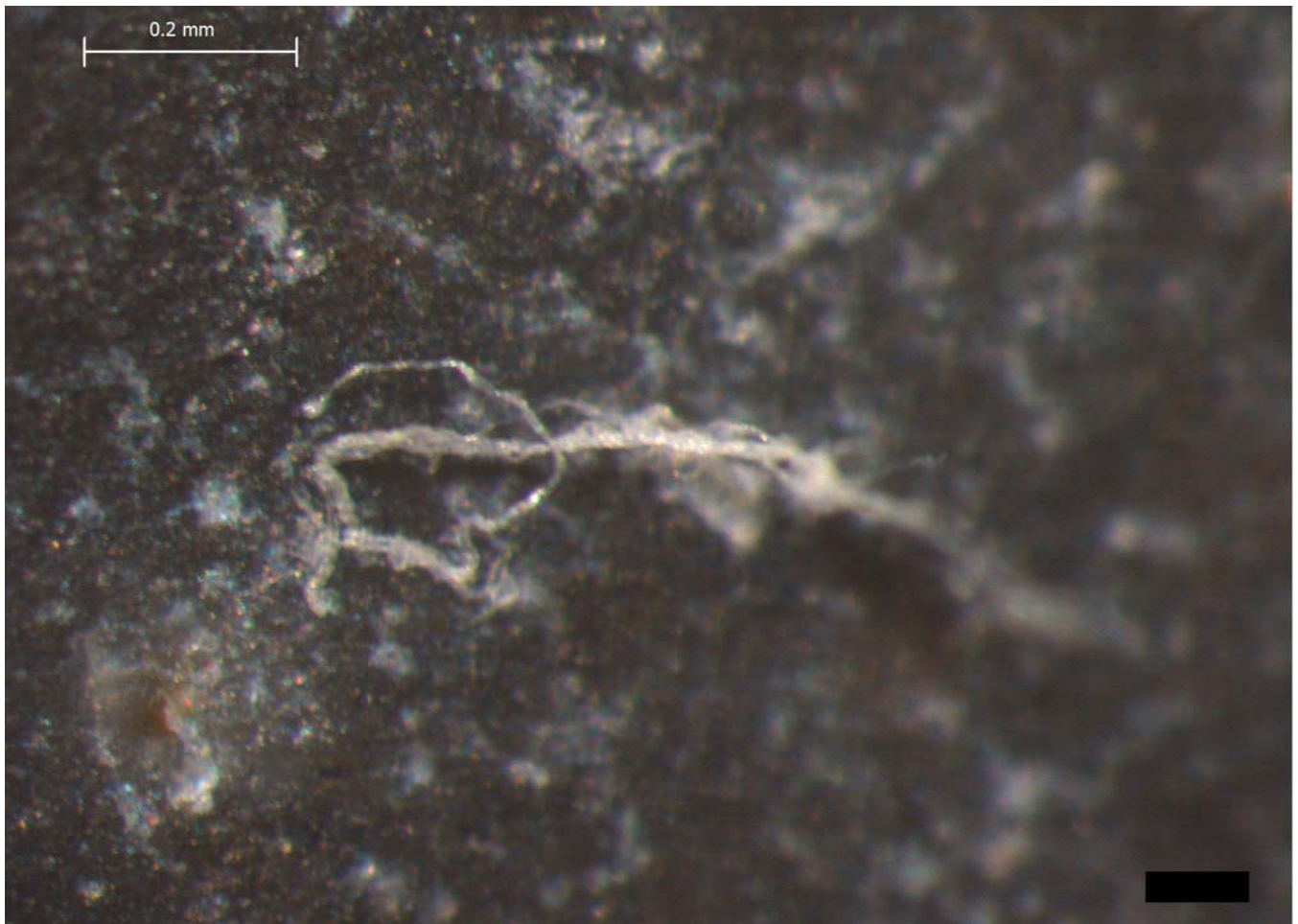
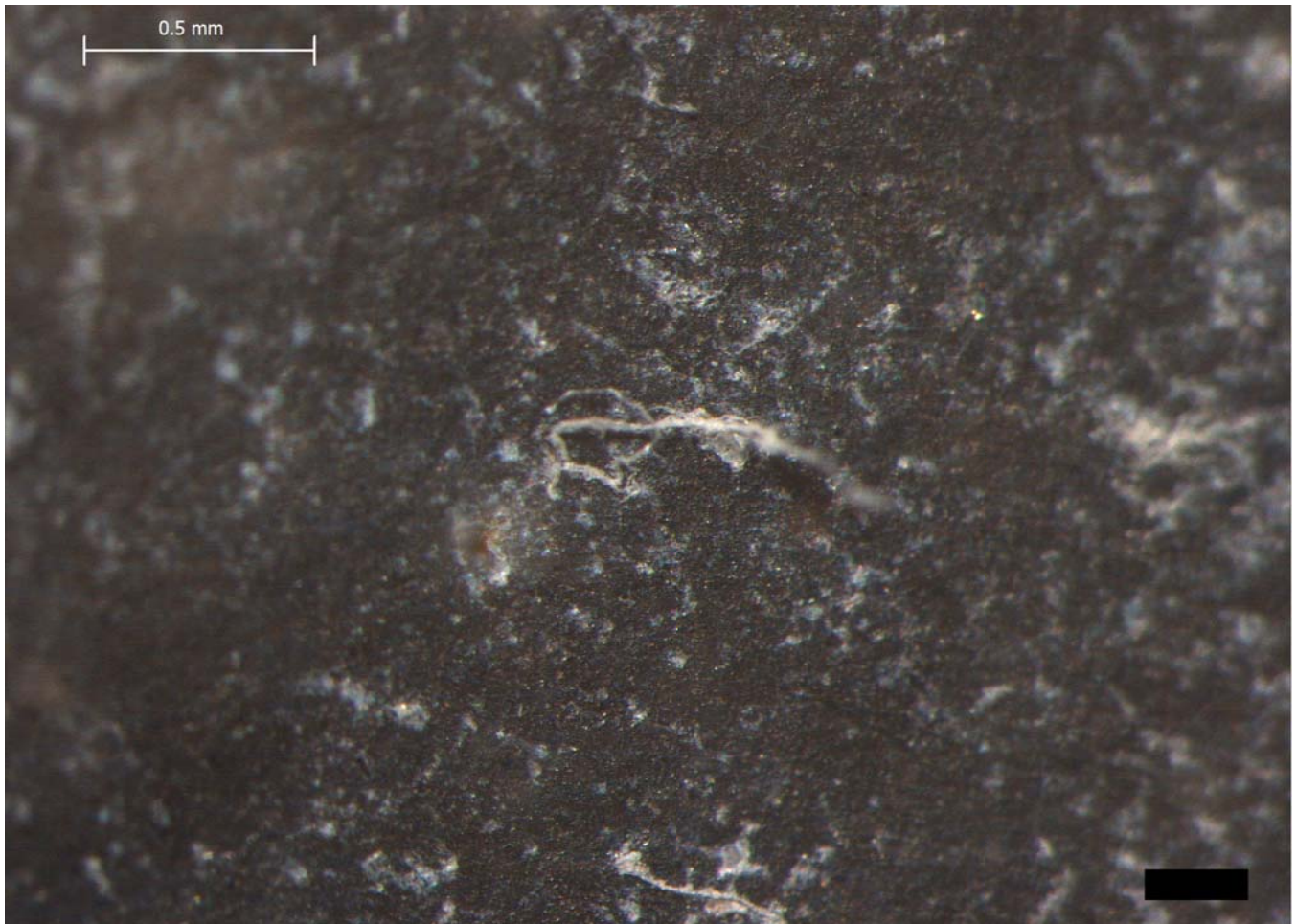
Residue 3Vb





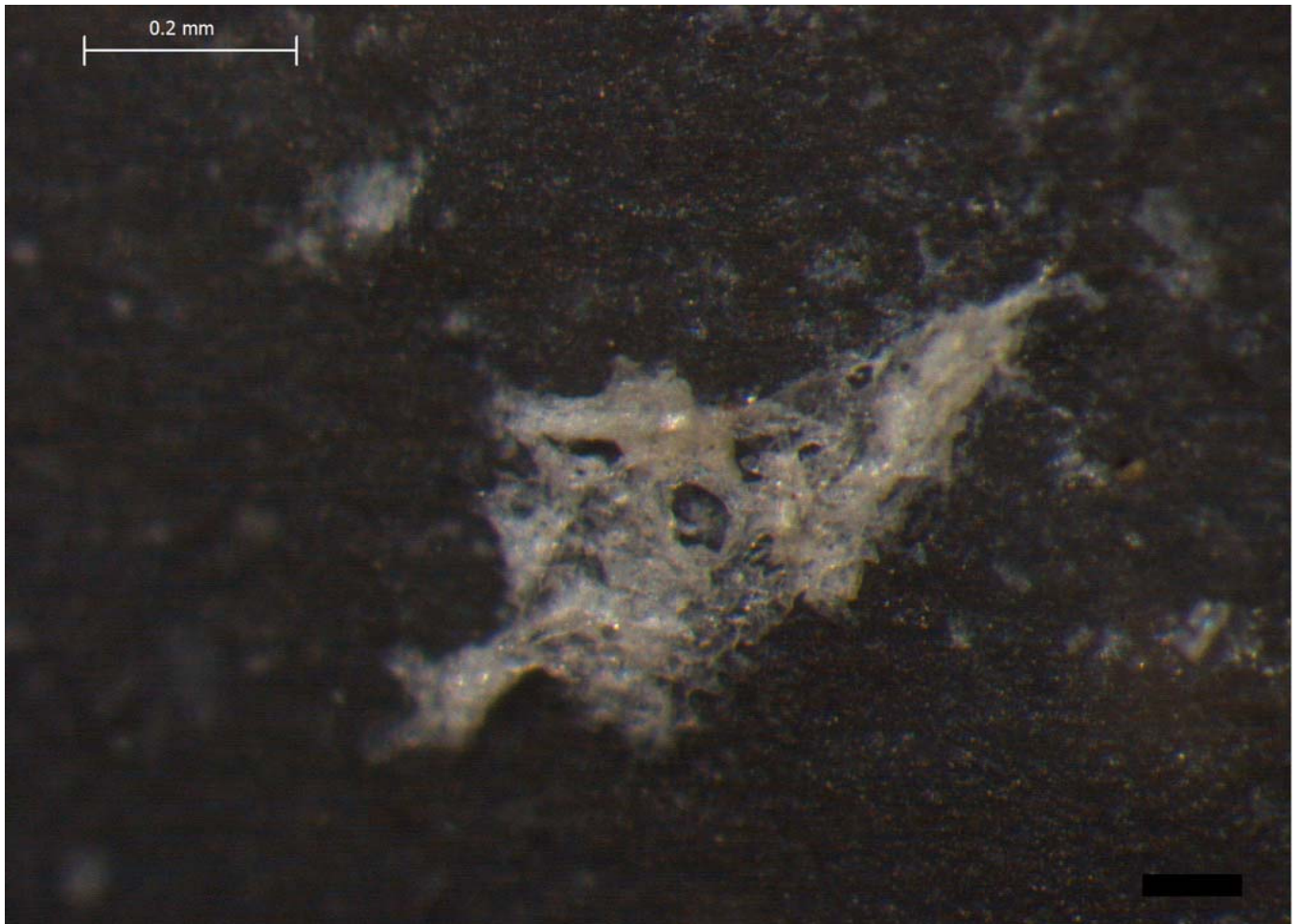
Blind Test 1

Residue 3Vc



Blind Test 1

Residue 3Vd



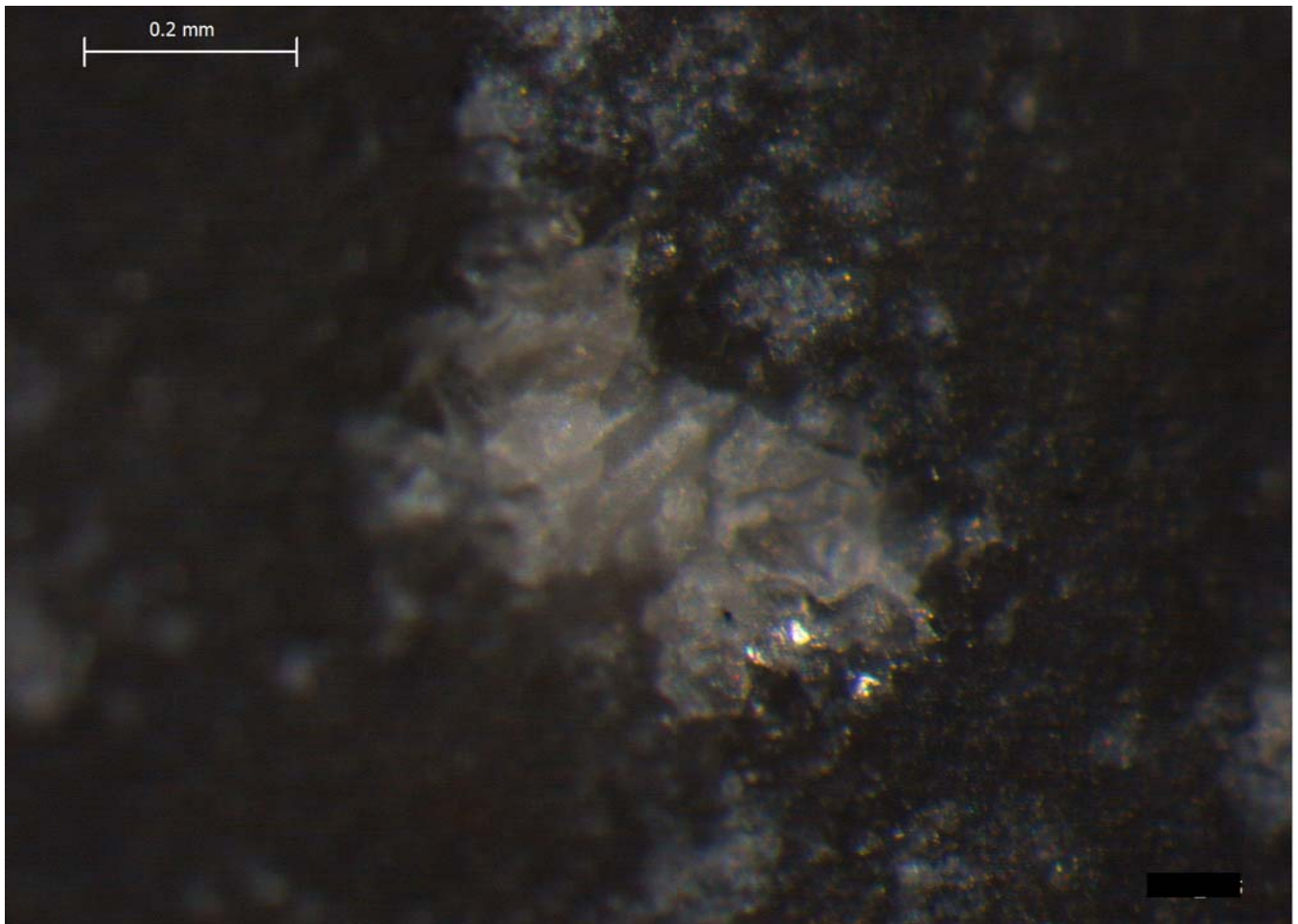
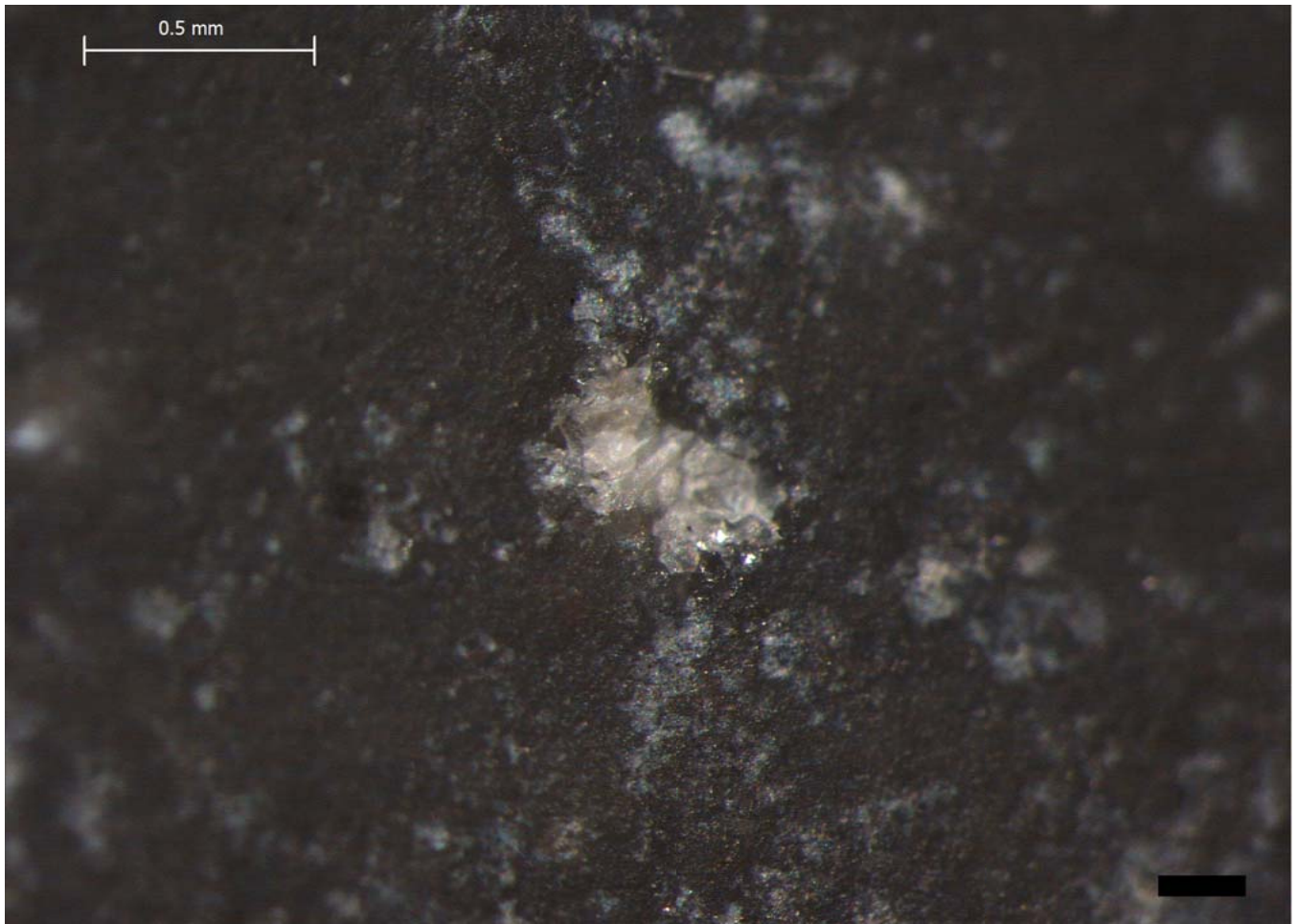
Blind Test 1

Residue 3Ve



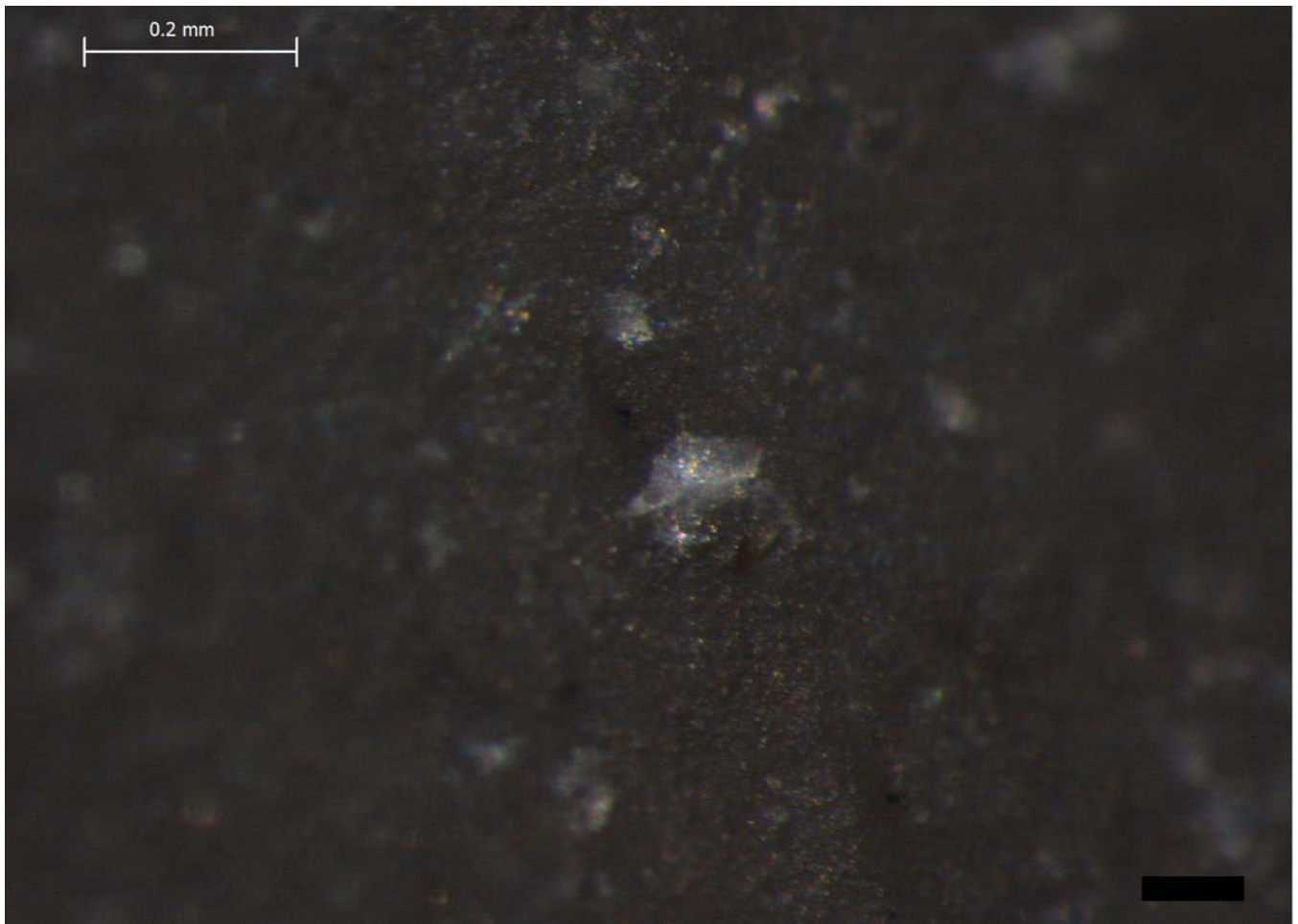
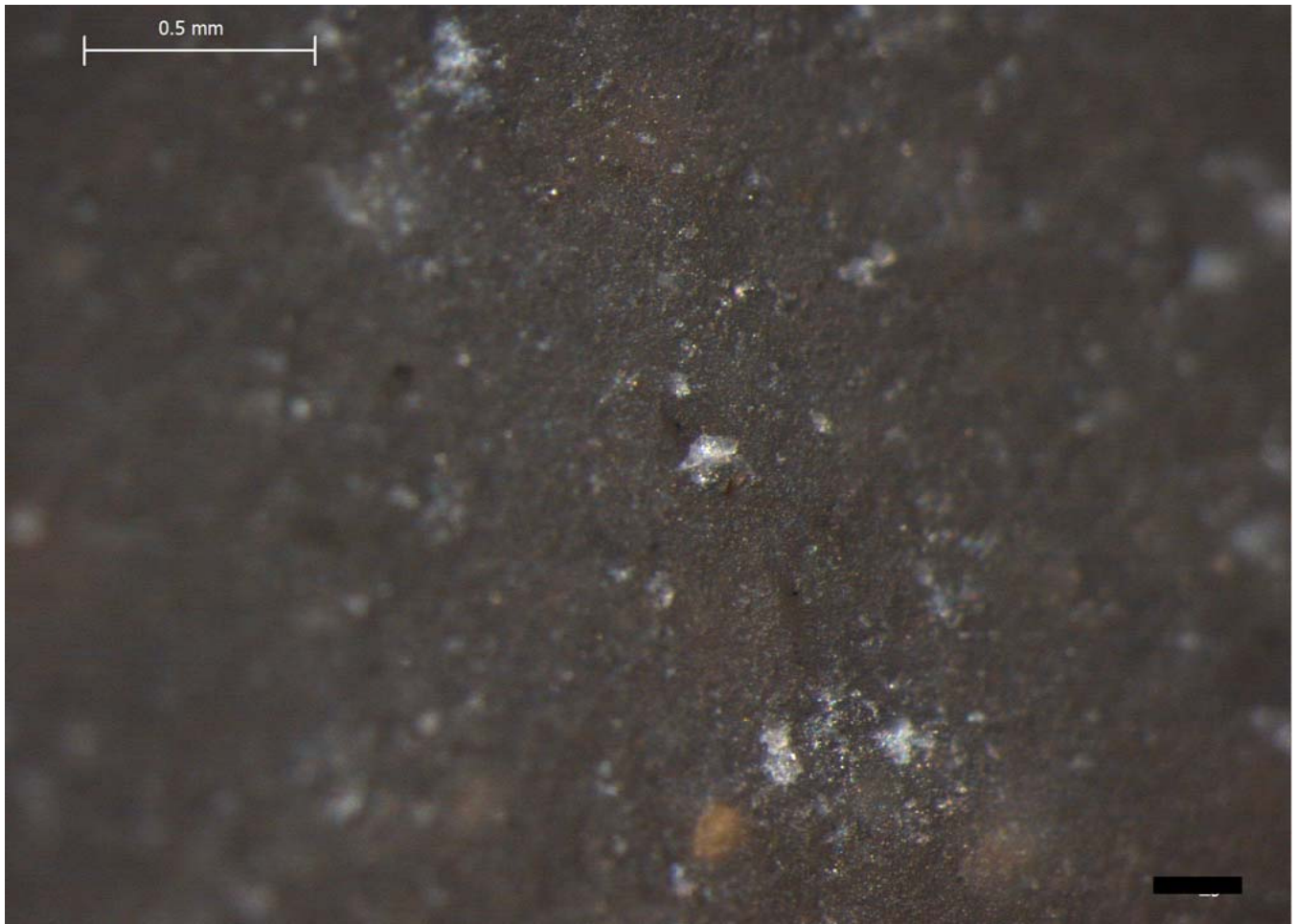
Blind Test 1

Residue 3Vf



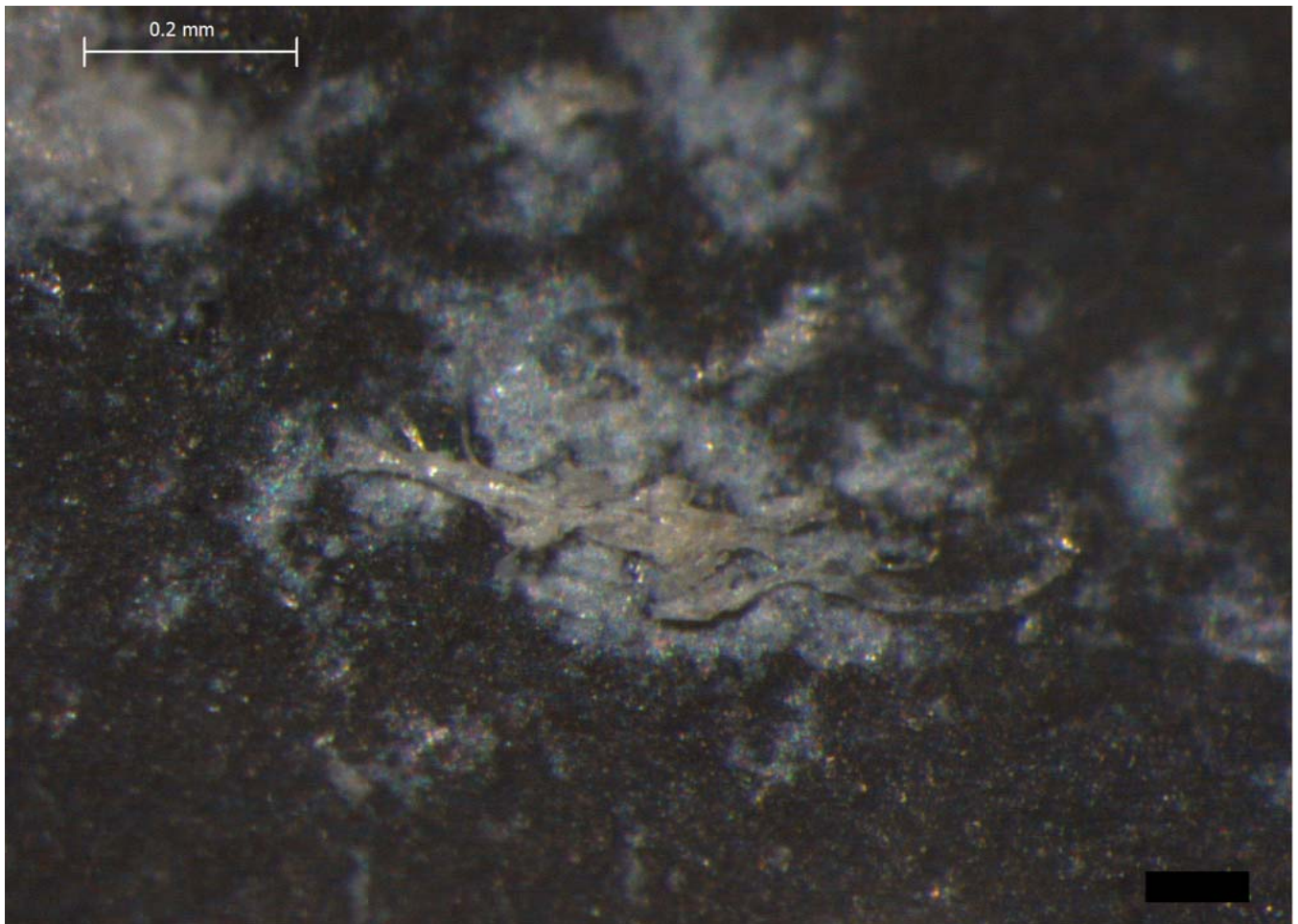
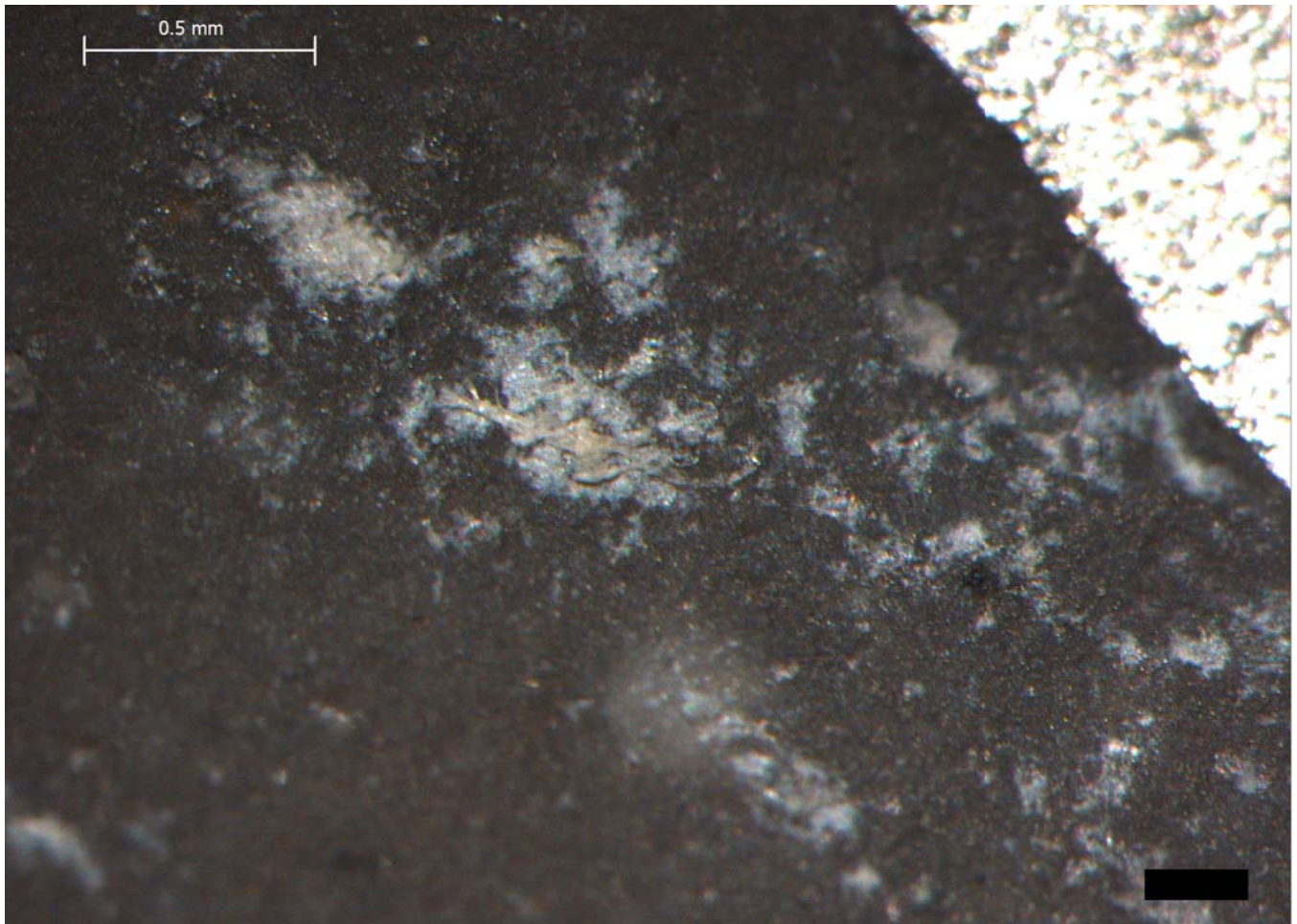
Blind Test 1

Residue 3Vg



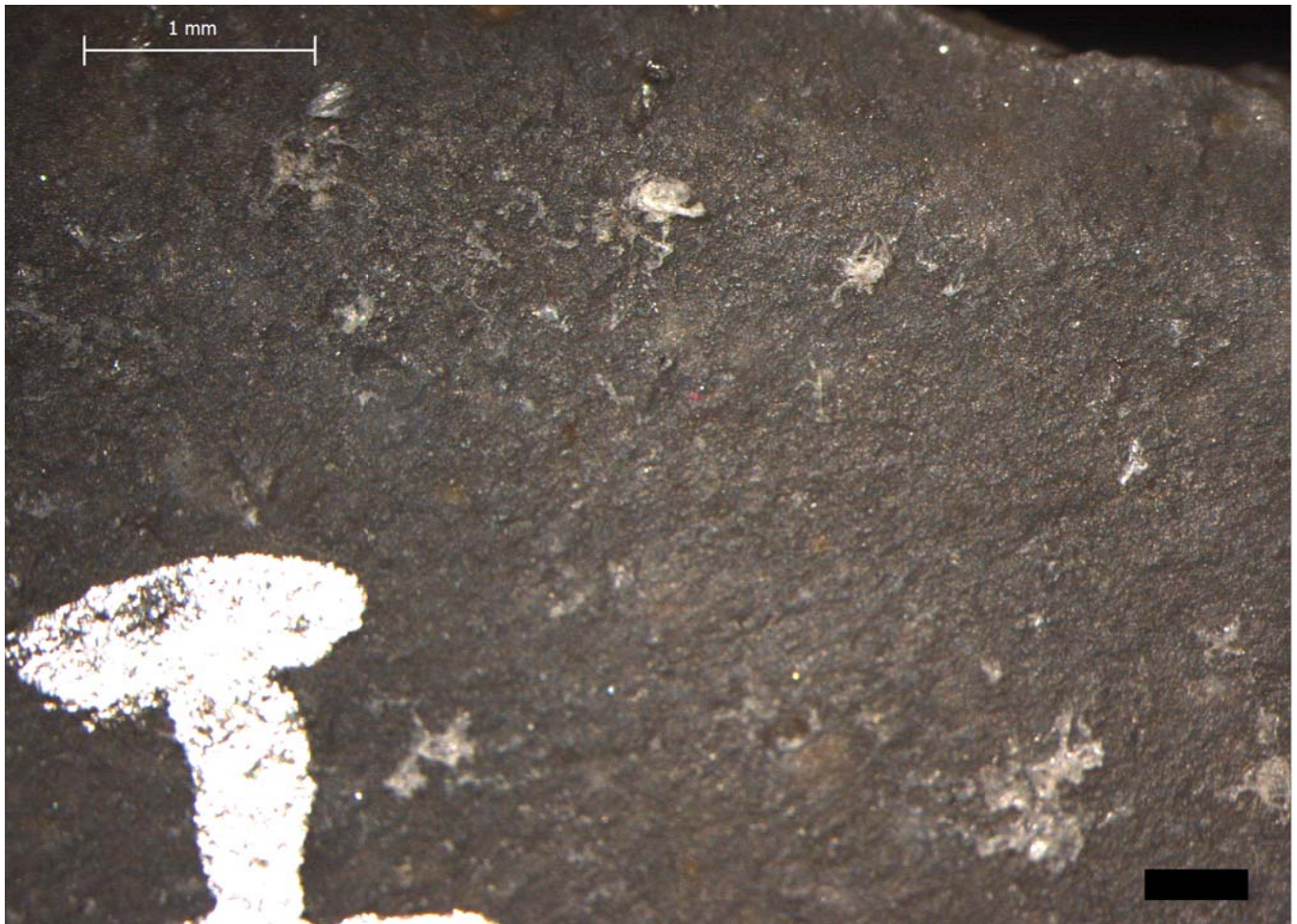
Blind Test 1

Residue 3Vh



Blind Test 1

Residue 3Vi





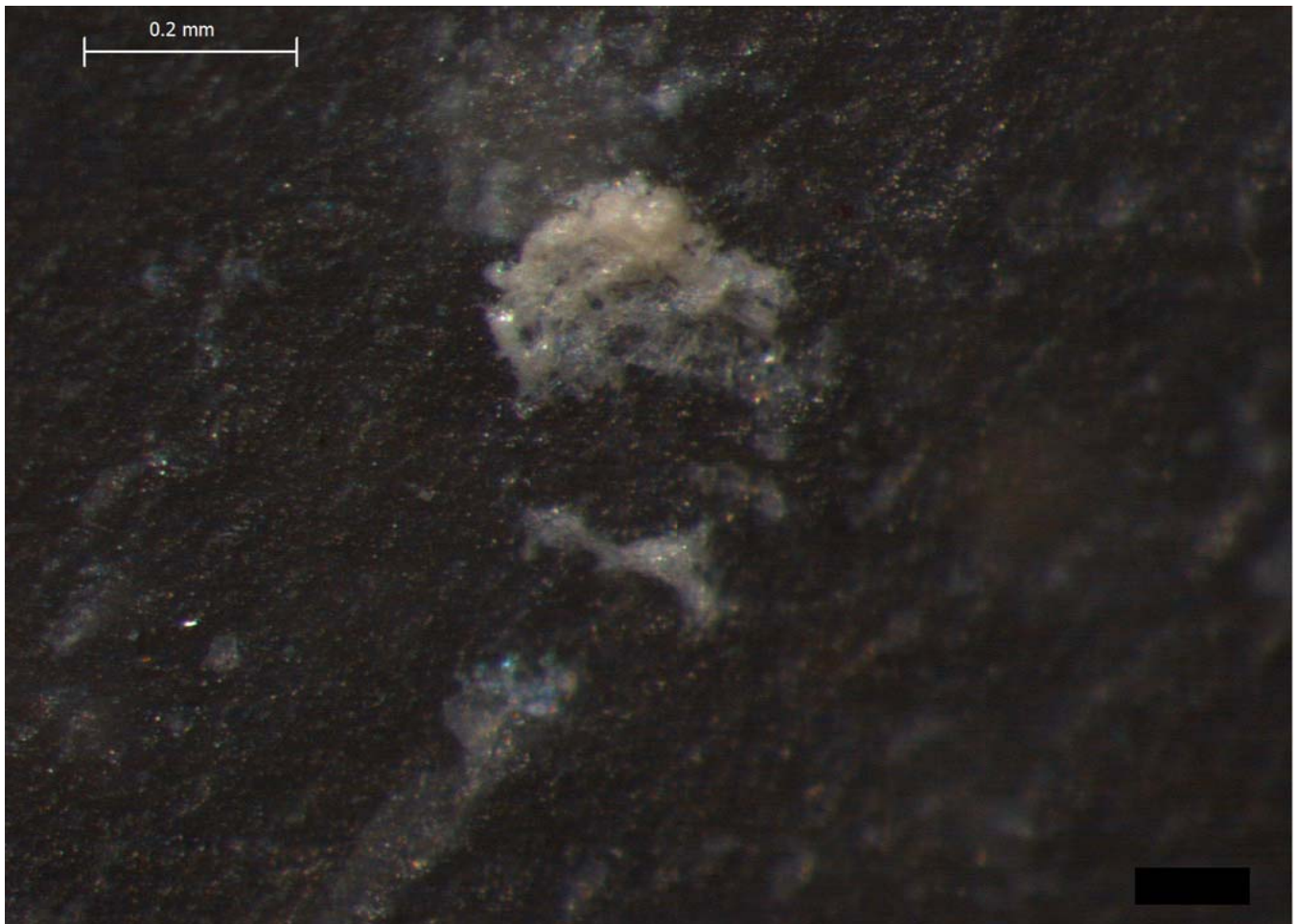
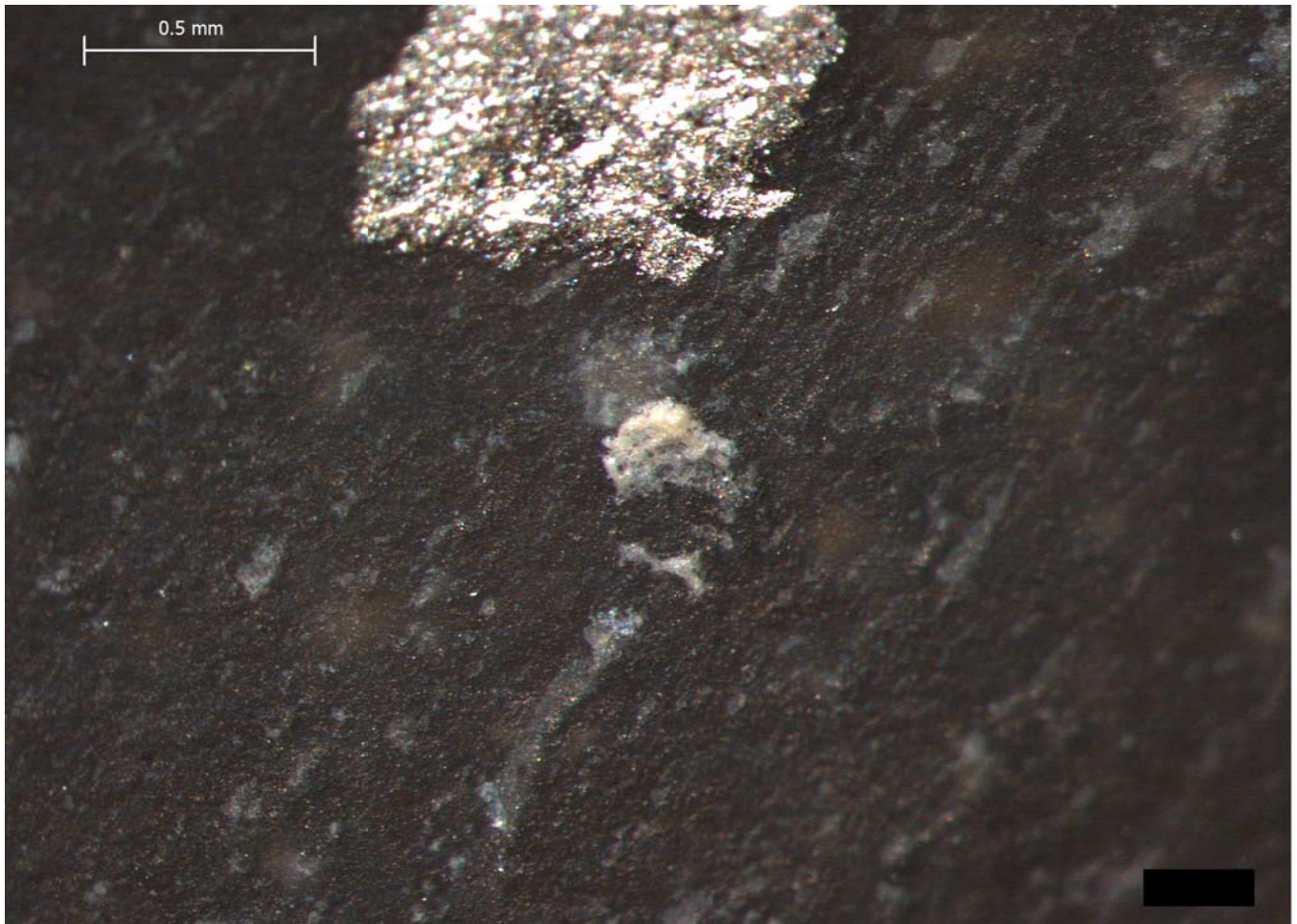
Blind Test 1

Residue 3Vj



Blind Test 1

Residue 3Vk



Blind Test 1

Residue 3VI

